



Wareemba, NSW

43 Coranto Street

2
BED

1
BATH

0
CAR

PRB
Real Estate



Perfect family starter in a prime location

Set over a single level to suit the young family or downsizer, 'Lilyvale' is a picturesque period home and the perfect introduction to one of the area's most convenient and highly sought locations. Promising comfortable modern living now as well as great future potential to add further value, it features freshly presented interiors and inviting traditional details. Almost in the heart of chic, vibrant Wareemba village, the home is footsteps to city buses and a boutique selection of shops, restaurants and cafes. It's also strolling distance to harbourfront parklands and Abbotsford Public School.

- * Grassy level backyard & paved alfresco courtyard
- * Lounge room with original brick open fireplace
- * Large separate dining room with soaring skylight

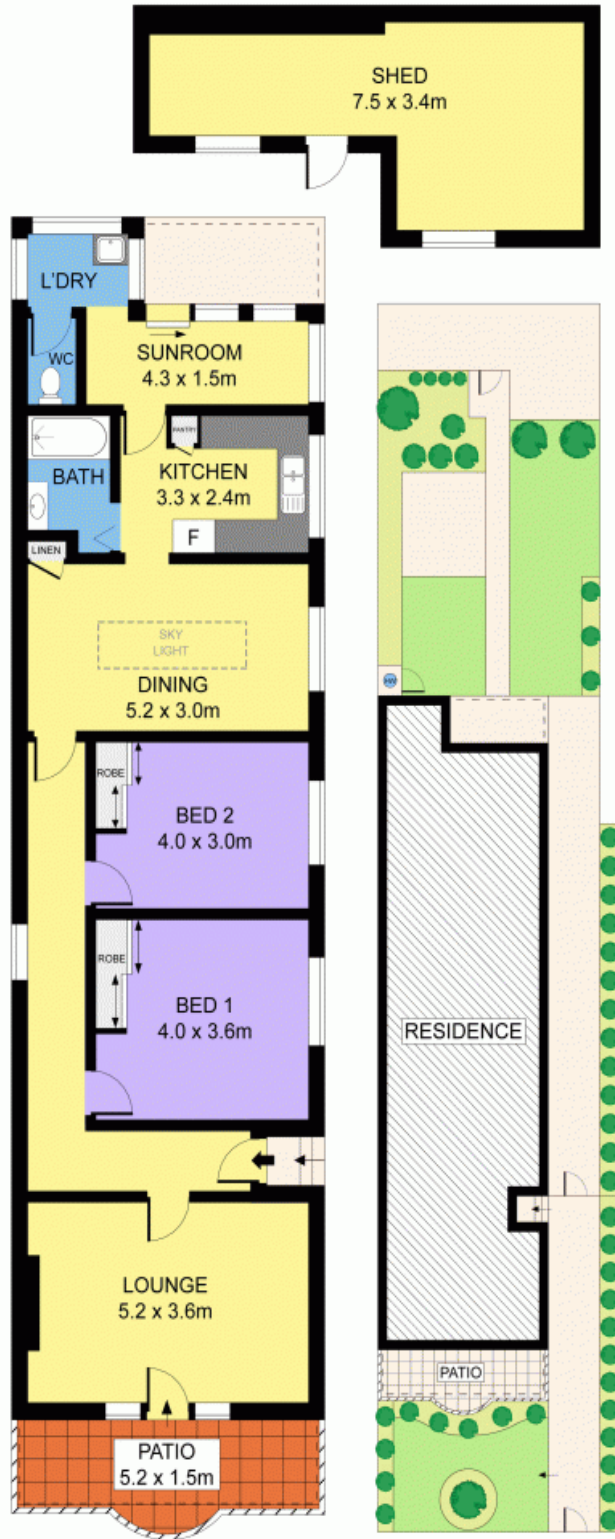
SOLD

Contact: Marcello Biviano
0410 700 700
Joe Rizzo
0417 427 527

Type: House

Sold Date: 27/08/2014

<http://www.prbrealestate.com.au>



43 CORANTO STREET, WAREEMBA

DISCLAIMER: PLANS SHOWN ARE FOR PRESENTATION PURPOSES AND ARE NOT PART OF ANY LEGAL DOCUMENT. ALL MEASUREMENTS AND FIGURES ARE APPROXIMATE.

Plans shown are only indicative of layout. Dimensions are approximate.

Wareemba, NSW
43 Coranto Street