



## Chiswick, NSW

5/2 Bortfield Drive

2  
BED

1  
BATH

0  
CAR

PRB  
Real Estate



### Affordable bayside blank canvas

In an exclusive locale at the tip of the peninsula, this completely original apartment represents a prime blank canvas opportunity and an affordable entry into a prized waterside address. Ready for a total refurbishment, the apartment would suit the first home buyer/investor looking to create a completely customised contemporary retreat with a rare 93sqm floor plan to work with. In a secluded yet remarkably convenient location, nestled between Abbotsford and Five Dock bays and just footsteps to the ferry wharf, Blackwall Point Road's local shops and cafes are an easy few minutes stroll away.

- \* Sought-after block w/ lift access & swimming pool
- \* Ultra-spacious open plan living and dining room
- \* Glass-fronted balcony with room for alfresco dining

### SOLD

#### Contact:

Marcello Biviano  
0410 700 700  
Joe Rizzo  
0417 427 527

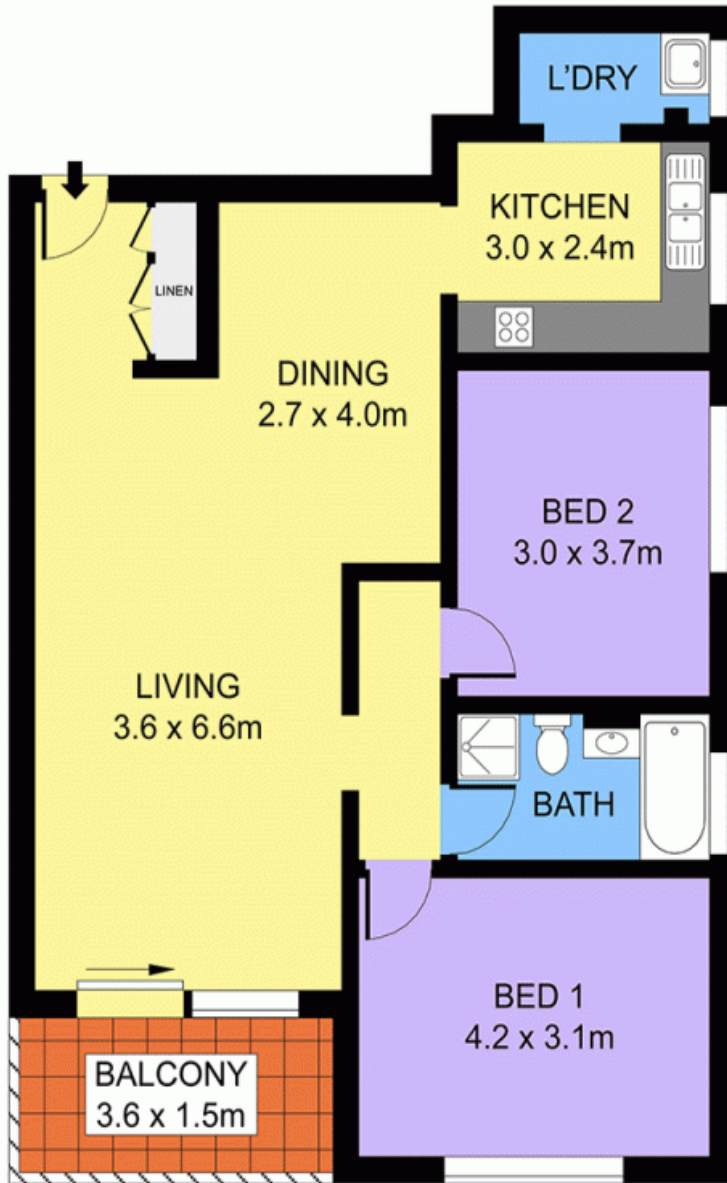
#### Type:

Apartment

#### Sold Date:

19/09/2014

<http://www.prbrealestate.com.au>



CAR SPACE  
EXCLUSIVE USE

**LEVEL TWO**



**5/2 BORTFIELD DRIVE, CHISWICK**

DISCLAIMER: PLANS SHOWN ARE FOR PRESENTATION PURPOSES AND ARE NOT PART OF ANY LEGAL DOCUMENT. ALL MEASUREMENTS AND FIGURES ARE APPROXIMATE.

Plans shown are only indicative of layout. Dimensions are approximate.

**Chiswick, NSW**  
5/2 Bortfield Drive