



Russell Lea, NSW

368 Lyons Road

3
BED

1
BATH

2
CAR

PRB
Real Estate



North facing home - lifestyle address

This picturesque period bungalow offers up plenty of charm and immense potential, perfectly sized to suit the young family and flooded with natural light. Set on a premier rear-to-north facing block, its refreshed interiors promise exceptionally comfortable living now with great future scope to customise and add value. Positioned for a lifestyle of utmost convenience, the home is just a few steps away from restaurants, cafes and city buses, and just a brief stroll to Russell Lea Infants School and Five Dock Park.

- * Formal lounge flows to open plan kitchen/dining
- * Separate informal living leads out to the rear yard
- * Sun drenched private courtyard and level gardens
- * Updated eat-in kitchen w/ dishwasher, gas cooking
- * Timber floors, high ceilings with ornate centre roses

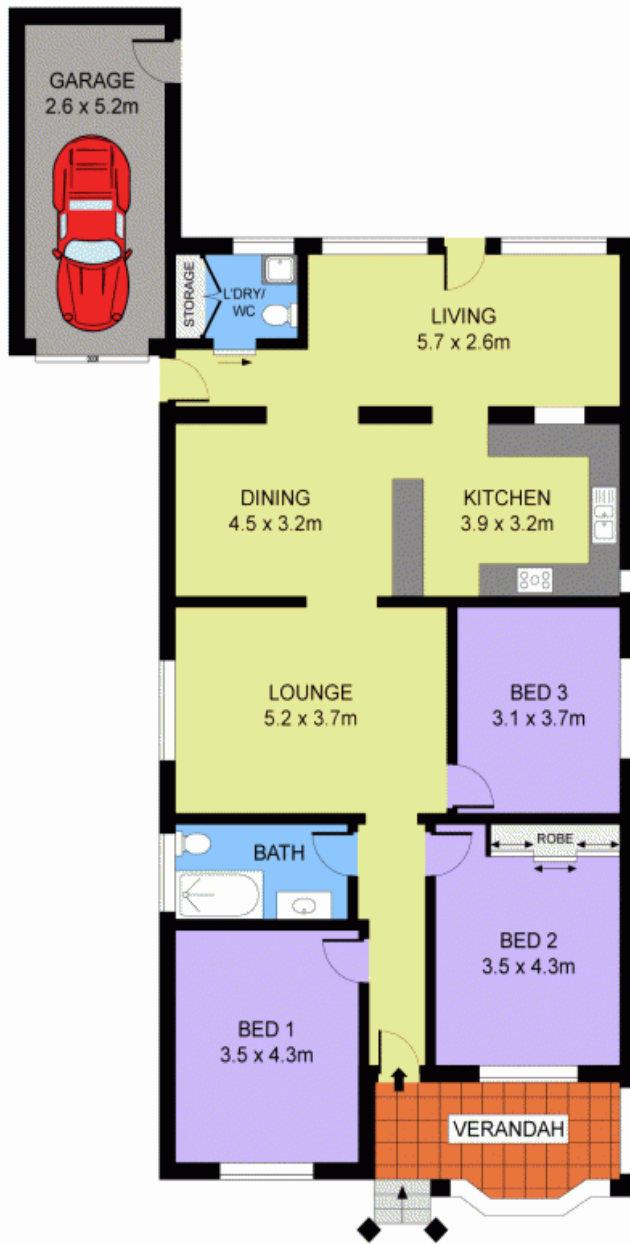
SOLD

Contact: Marcello Biviano
0410 700 700
Joe Rizzo
0417 427 527

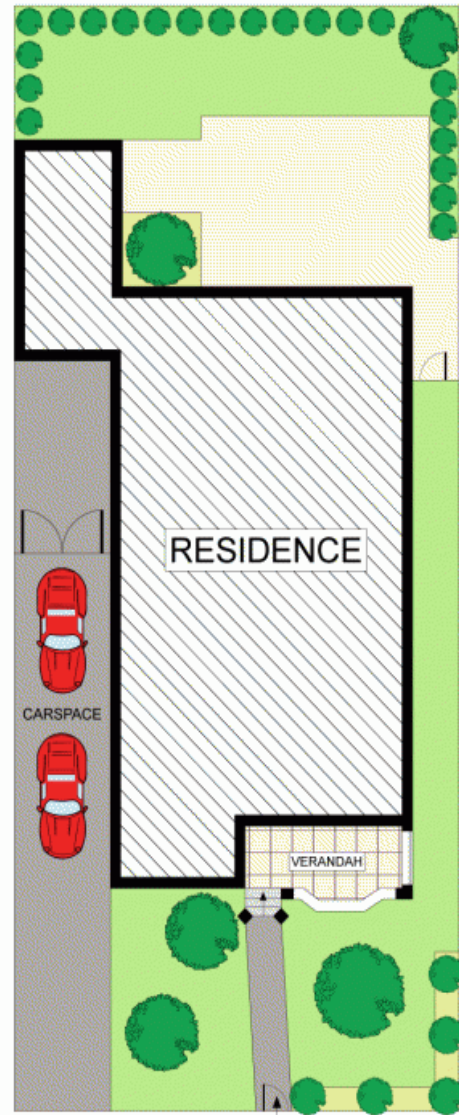
Type: House

Sold Date: 07/11/2014

<http://www.prbrealestate.com.au>



GROUND FLOOR



SITE PLAN
(NOT TO SCALE)



368 LYONS ROAD, RUSSELL LEA

DISCLAIMER: PLANS SHOWN ARE FOR PRESENTATION PURPOSES AND ARE NOT PART OF ANY LEGAL DOCUMENT. ALL MEASUREMENTS AND FIGURES ARE APPROXIMATE.

Plans shown are only indicative of layout. Dimensions are approximate.

Russell Lea, NSW
368 Lyons Road