



Chiswick, NSW

4/5 Bortfield Drive

2
BED

1
BATH

1
CAR

PRB
Real Estate



Contemporary bayside living

Refreshed by smart, stylish contemporary updates, this appealingly spacious two bedroom apartment is an attractive offering for first home buyers, downsizers and investors ready to move into now while offering future potential to add your own personalised modern touches. Set on the first floor of a pet-friendly security block, it enjoys an abundance of streaming natural light. Nestled between Abbotsford and Five Dock bays and just footsteps to Chiswick Ferry Wharf, the location is quiet yet remarkably convenient, an easy few minutes stroll to city buses, local shops and cafes.

- * Spacious combined living/dining, undercover balcony
- * Contemporary kitchen with CaesarStone benchtops
- * Stainless steel gas cooktop, oven and dishwasher

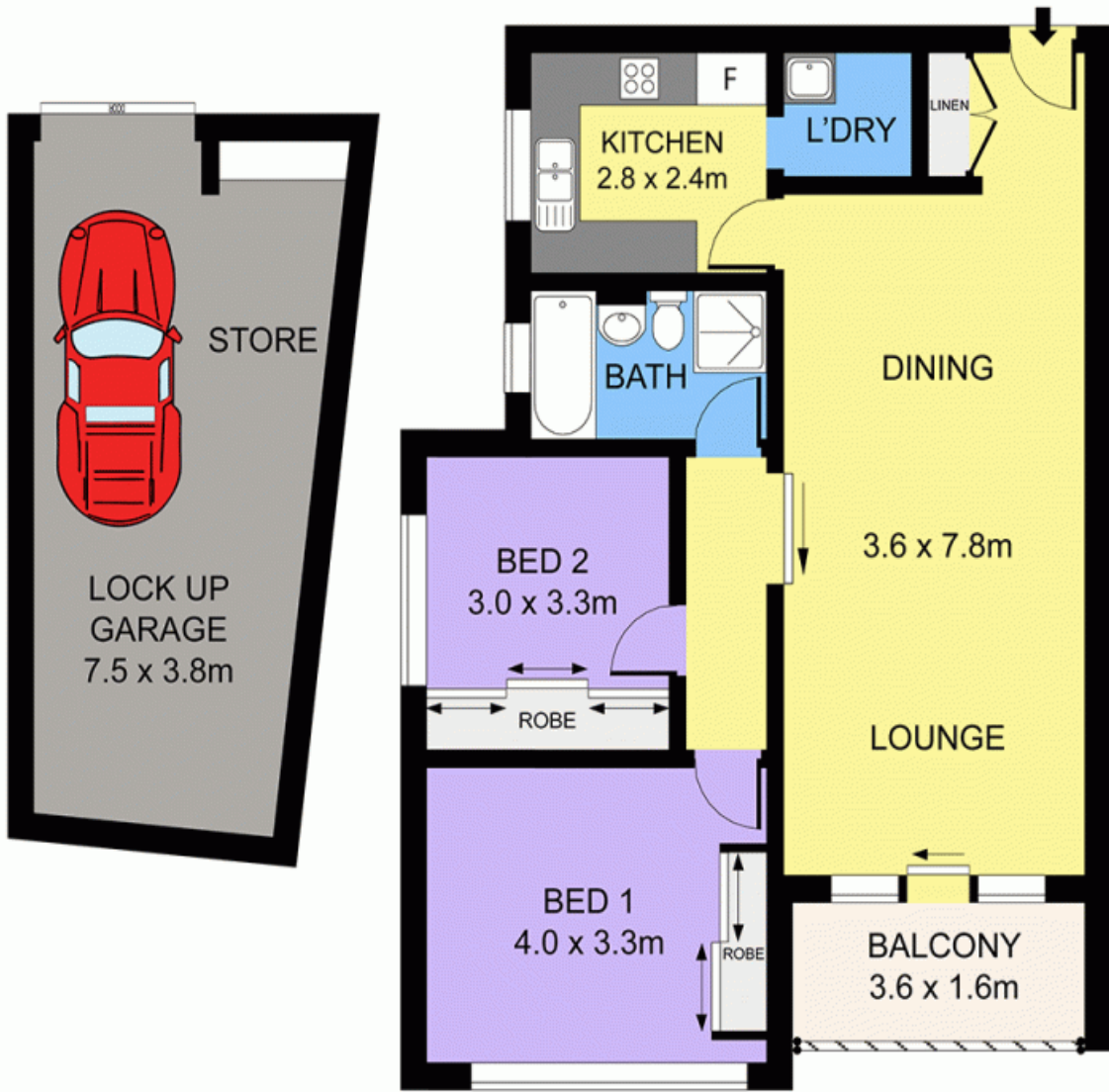
SOLD

Contact: Marcello Biviano
0410 700 700
Joe Rizzo
0417 427 527

Type: Apartment

Sold Date: 20/02/2015

<http://www.prbrealestate.com.au>



ELEVATED GROUND FLOOR



4/5 BORTFIELD DRIVE, CHISWICK

DISCLAIMER: PLANS SHOWN ARE FOR PRESENTATION PURPOSES AND ARE NOT PART OF ANY LEGAL DOCUMENT. ALL MEASUREMENTS AND FIGURES ARE APPROXIMATE.

Plans shown are only indicative of layout. Dimensions are approximate.

Chiswick, NSW
4/5 Bortfield Drive