



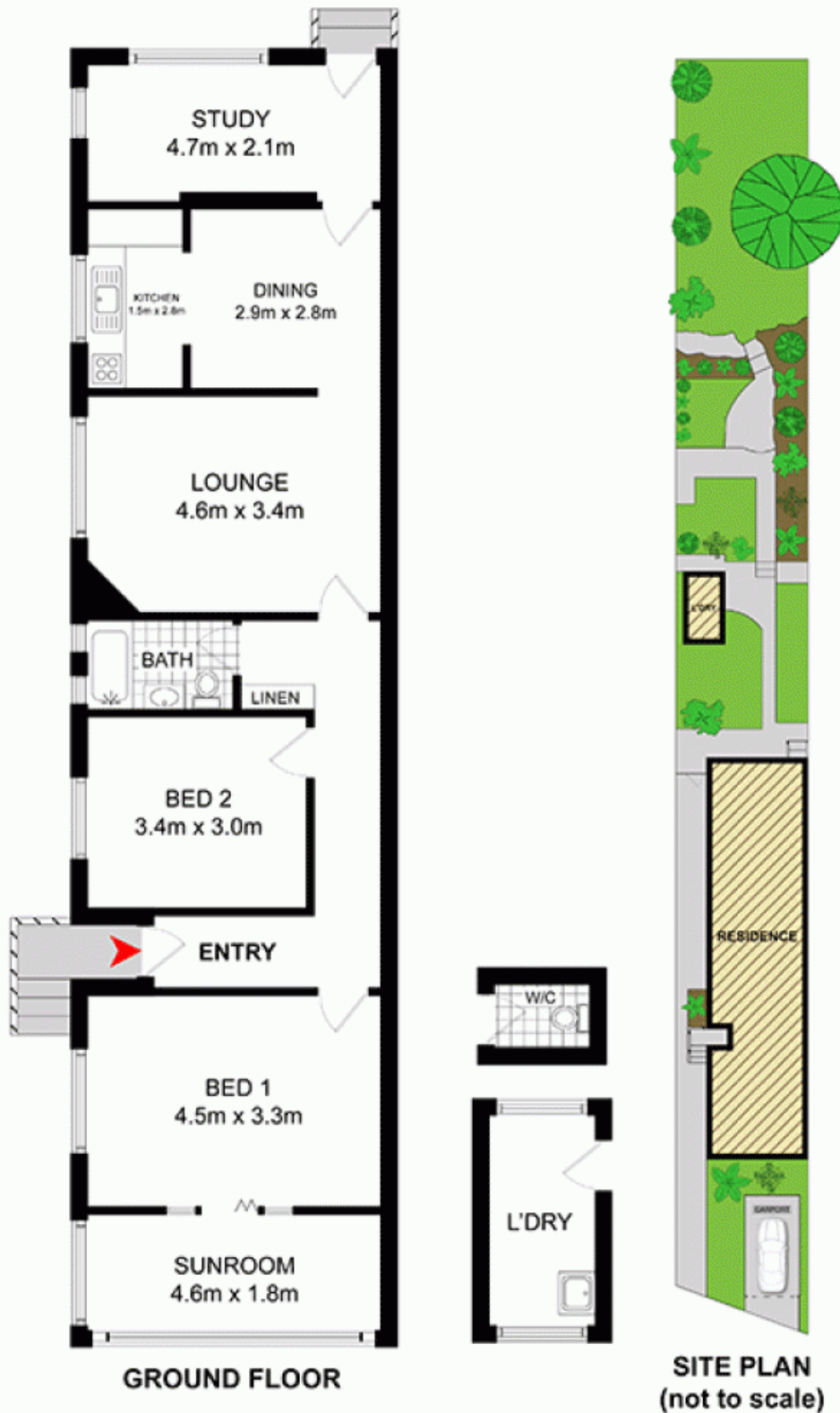
**Chiswick, NSW**  
16 Burns Crescent

<b>2</b> BED	<b>1</b> BATH	<b>1</b> CAR	<b>PRB</b> Real Estate	
-----------------	------------------	-----------------	---------------------------	--

**Character semi on a deep block with huge potential**  
Here is your chance to make your mark on a prestigious peninsula address and transform this gorgeous traditional semi into a customised contemporary retreat. Freshly schemed, full of period character and perfectly comfortable as-is, it occupies a deep, versatile 411sqm block, offering the opportunity to extend both outwards and upwards (STCA). Surrounded by quality family homes, its tightly-held setting is footsteps from waterfront parks along Five Dock Bay, walking distance to local eateries and a stroll to the ferry wharf and buses to the city.

**SOLD**  
**Contact:** Joe Rizzo  
0417 427 527  
Marcello Biviano  
0410 700 700  
**Type:** House  
**Sold Date:** 29/10/2015  
<http://www.prbrealestate.com.au>

- \* Beautifully restored ornate high ceilings, timber flooring
- \* Central lounge room, separate dining open to the kitchen
- \* Generous rear sunroom with direct access to the backyard
- \* Secure yard, level lawn areas, great entertaining potential



**PRB**  
Real Estate



0 1m 2m 3m 4m



16 BURNS CRESCENT,  
CHISWICK

DISCLAIMER: PLANS SHOWN ARE FOR PRESENTATION PURPOSES AND ARE NOT PART OF ANY LEGAL DOCUMENT ALL MEASUREMENTS AND FIGURES ARE APPROXIMATE.

Plans shown are only indicative of layout. Dimensions are approximate.

**Chiswick, NSW**  
16 Burns Crescent