



## Russell Lea, NSW

1/84 Hampden Road

**2**  
BED

**1**  
BATH

**2**  
CAR

**PRB**  
Real Estate



### Luxuriously renovated boutique apartment

An ambiance of boutique luxury defines this beautifully renovated 134sqm apartment, set on the ground floor of a small block of 10 with its own private street front entrance. Showcasing chic designer inclusions, ample entertaining space and a flowing design, it boasts a central location, city buses at the doorstep with waterfront parkland within metres and Abbotsford village shops and school only a short stroll away.

- \* Generous open plan living, dining and eat-in kitchen
- \* Wide, garden-facing balcony sized for alfresco dining
- \* CaesarStone island kitchen featuring stainless steel appliances
- \* Huge master bedroom w/built in, 2nd bedroom w/ walk-in
- \* Elegantly renovated bathroom with bath and shower
- \* Internal laundry, lock-up garage with storage plus adjacent car space

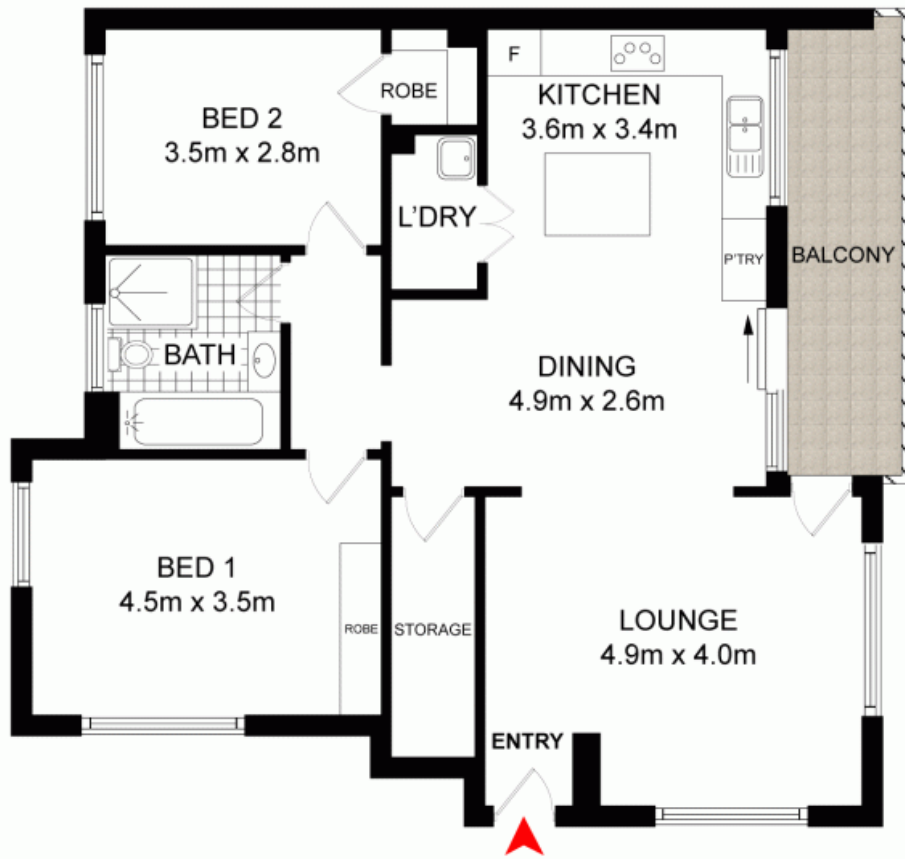
### SOLD

**Contact:** Joe Rizzo  
0417 427 527  
Marcello Biviano  
0410 700 700

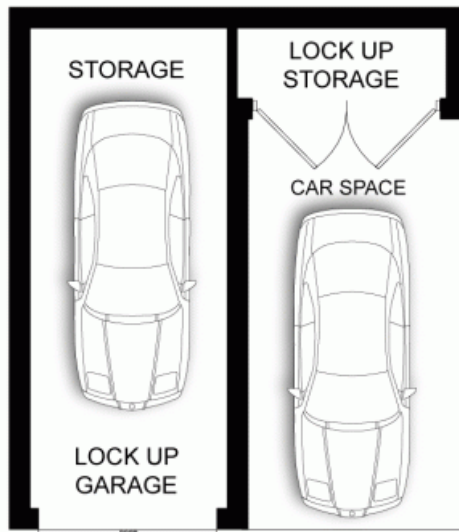
**Type:** Apartment

**Sold Date:** 18/12/2016

<http://www.prbrealestate.com.au>



**GROUND FLOOR**



**PRB**  
Real Estate



**1/84 HAMPDEN ROAD  
RUSSELL LEA**

DISCLAIMER: PLANS SHOWN ARE FOR PRESENTATION PURPOSES AND ARE NOT PART OF ANY LEGAL DOCUMENT. ALL MEASUREMENTS AND FIGURES ARE APPROXIMATE.

Plans shown are only indicative of layout. Dimensions are approximate.

**Russell Lea, NSW**  
1/84 Hampden Road