



Chiswick, NSW
5/13 Bortfield Drive

2 BED	2 BATH	1 CAR	PRB Real Estate	
-----------------	------------------	-----------------	---------------------------	--

Contemporary bayside living

This appealingly spacious two bedroom, two bathroom apartment is an attractive offering for first home buyers, downsizers and investors ready to move into now while offering future potential to add your own personalised modern touches. Set on the second floor of a waterfront security block, it enjoys an abundance of streaming natural light. Nestled between Abbotsford and Five Dock bays and just footsteps to Chiswick Ferry Wharf, the location is quiet yet remarkably convenient, an easy few minutes stroll to city buses, local shops and cafes.

SOLD

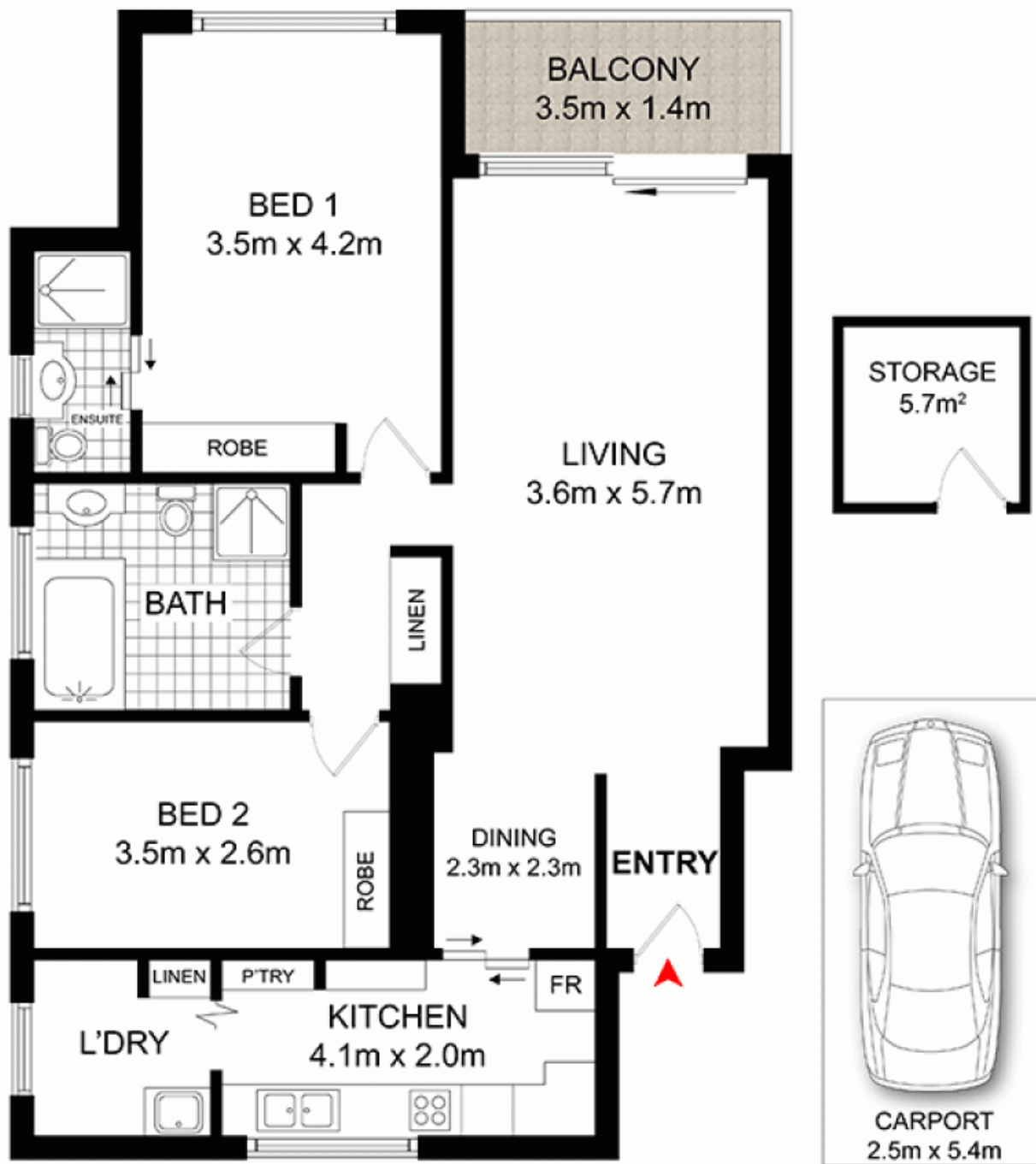
Contact: Marcello Biviano
0410 700 700
Joe Rizzo
0417 427 527

Type: Apartment

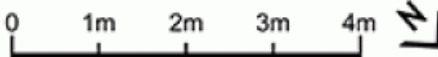
Sold Date: 09/03/2016

<http://www.prbrealestate.com.au>

- Modern 2 bed 2 bath apartment in waterfront complex
- Spacious light filled interiors, balcony with water views
- Contemporary kitchen with internal Laundry
- Both bedrooms feature mirrored built-in wardrobes



PRB
Real Estate



5/13 BORTFIELD DRIVE,
CHISWICK

DISCLAIMER: PLANS SHOWN ARE FOR PRESENTATION PURPOSES AND ARE NOT PART OF ANY LEGAL DOCUMENT ALL MEASUREMENTS AND FIGURES ARE APPROXIMATE.

Plans shown are only indicative of layout. Dimensions are approximate.

Chiswick, NSW
5/13 Bortfield Drive