



Chiswick, NSW

8/6 Bortfield Drive

2
BED

1
BATH

1
CAR

PRB
Real Estate



Updated Waterside apartment

Prestigiously positioned at the tip of the peninsula, this spectacularly updated apartment is literally seconds away from the water's edge and metres to Chiswick Ferry Wharf. Situated on the first floor of a sought-after security building, the apartment is directly opposite Armitage Reserve on Abbotsford Bay and is a short stroll to buses, local shops and cafes on Blackwall Point Road.

- * Living/dining area flows to balcony with filtered views
- * Modern gas kitchen with ample storage and breakfast bench
- * Original bathroom with bath and shower, internal laundry
- * Two north-east facing bedrooms, main with built ins
- * Air Conditioning, Covered single car space and storeroom
- * Quiet one-way street walk to Chiswick village shops and buses

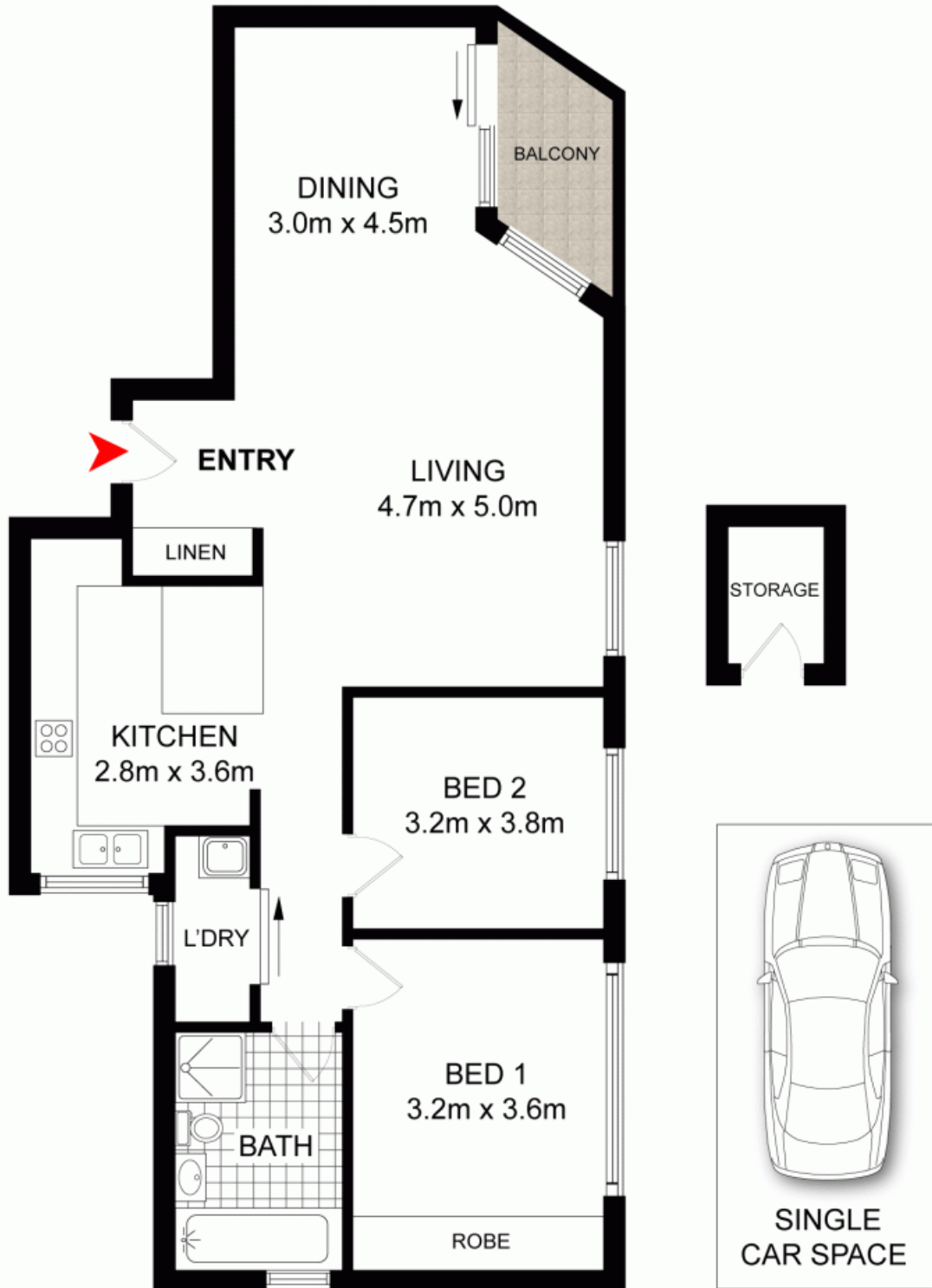
SOLD

Contact: Marcello Biviano
0410 700 700
Joe Rizzo
0417 427 527

Type: Apartment

Sold Date: 30/03/2016

<http://www.prbrealestate.com.au>



PRB
Real Estate



8/6 BORTFIELD DRIVE,
CHISWICK

DISCLAIMER: PLANS SHOWN ARE FOR PRESENTATION PURPOSES AND ARE NOT PART OF ANY LEGAL DOCUMENT. ALL MEASUREMENTS AND FIGURES ARE APPROXIMATE.

Plans shown are only indicative of layout. Dimensions are approximate.

Chiswick, NSW
8/6 Bortfield Drive