



## Abbotsford, NSW

1/4 Harbourview Crescent

**3** BED **2** BATH **2** CAR **PRB** Real Estate **RB**

### Premier size, position and phenomenal bay views

Blessed with a premier corner position in the waterfront 'Flinders' building, set within the resort-inspired 'Abbotsford Cove' this sensational 318sqm house-sized apartment is immersed in incredible unobstructed views over the boat-filled waters of Abbotsford Bay and the adjoining Foreshore Park. Drenched in light and surrounded by sublimely manicured grounds, each of the oversized, elegantly appointed rooms boast views opening out to the water or lush landscaped courtyards.

- \* Open plan living, tinted windows provide privacy & perfect views
- \* Vast glass-fronted entertainers terrace with retractable awning
- \* Luxe master suite opening on to courtyard with views and walk-in robe
- \* Renovated kitchen, quality appliances, breakfast bar
- \* Completely renovated luxury Ensuite and Master Bathroom
- \* Ducted A/C, 43sqm DLUG, copious storage throughout

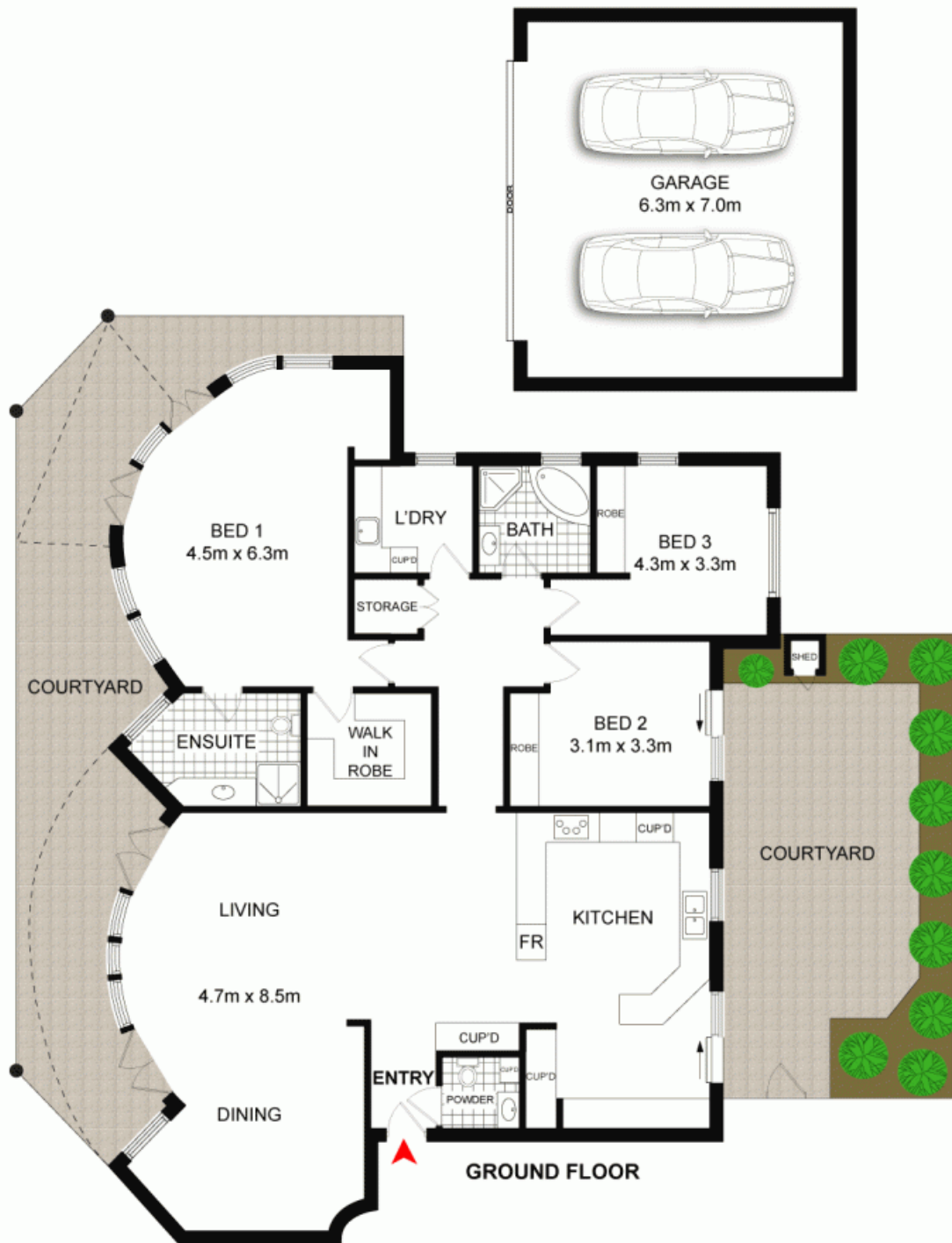
### SOLD

**Contact:** Marcello Biviano  
0410 700 700  
Joe Rizzo  
0417 427 527

**Type:** Apartment

**Sold Date:** 18/12/2016

<http://www.prbrealestate.com.au>



**PRB**  
Real Estate



0 1m 2m 3m 4m



1/4 HARBOURVIEW CRESCENT,  
ABBOTSFORD

DISCLAIMER: PLANS SHOWN ARE FOR PRESENTATION PURPOSES AND ARE NOT PART OF ANY LEGAL DOCUMENT. ALL MEASUREMENTS AND FIGURES ARE APPROXIMATE.

Plans shown are only indicative of layout. Dimensions are approximate.

**Abbotsford, NSW**  
1/4 Harbourview Crescent