



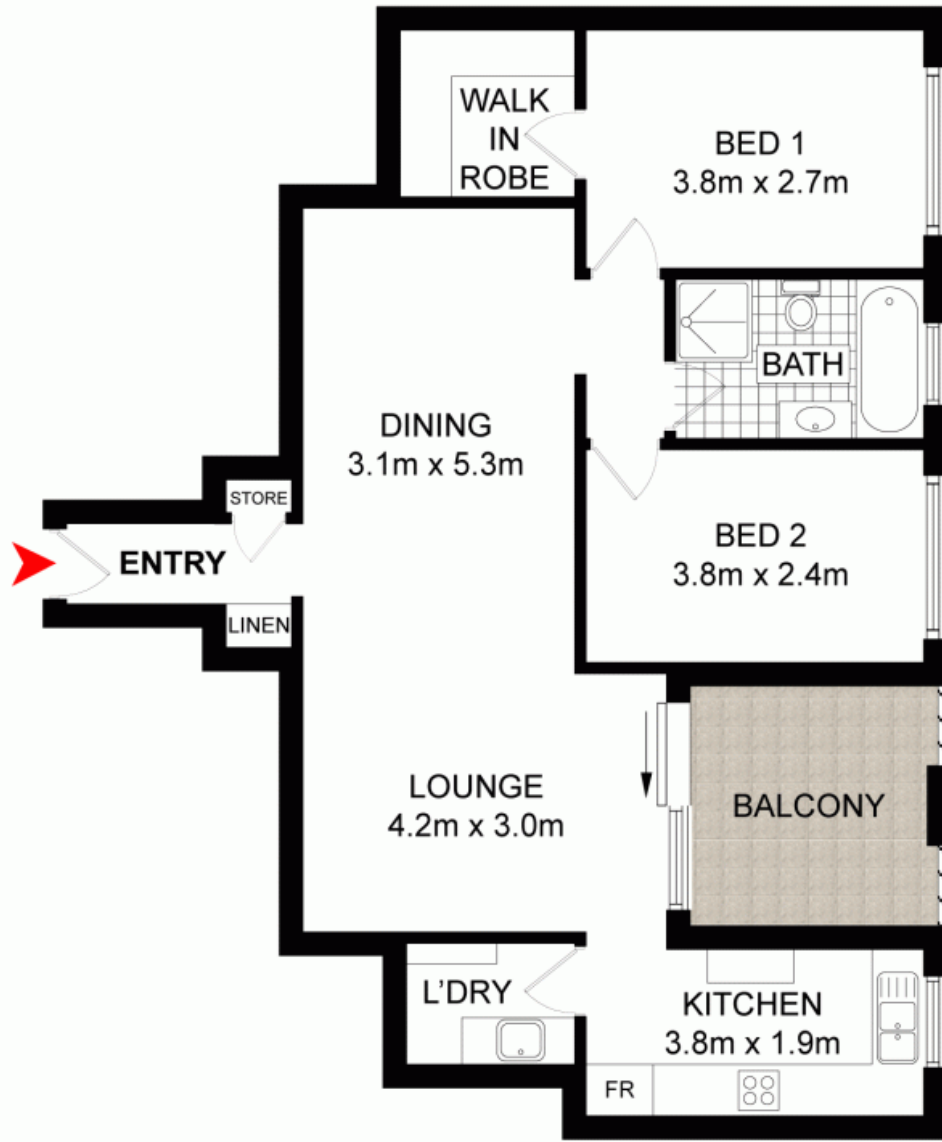
**Abbotsford, NSW**  
4/27 Walton Crescent

|                 |                  |                 |                           |  |
|-----------------|------------------|-----------------|---------------------------|--|
| <b>2</b><br>BED | <b>1</b><br>BATH | <b>2</b><br>CAR | <b>PRB</b><br>Real Estate |  |
|-----------------|------------------|-----------------|---------------------------|--|

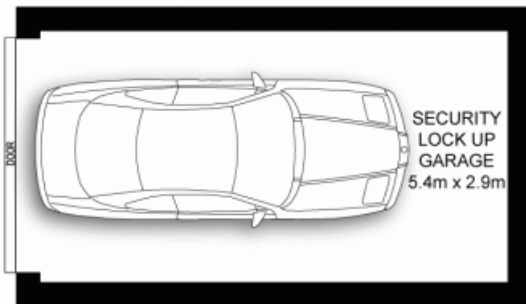
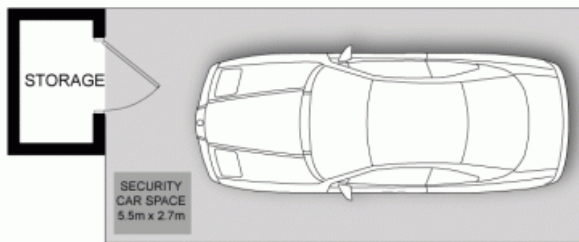
**Tranquil waterside living at its convenient best**  
In a truly sensational lifestyle location, tucked away in one of Abbotsford's most prestigious waterfront precincts, this renovated, boutique security apartment is superbly situated footsteps from Abbotsford Cove Foreshore Park and 650m from the ferry wharf. Whisper quiet despite its proximity to every amenity, the apartment features a long list of appealing details, including an abundance of in and outdoor living space, quality contemporary updates and plentiful amounts of storage.

**SOLD**  
**Contact:** Joe Rizzo  
0417 427 527  
Marcello Biviano  
0410 700 700  
**Type:** Unit  
**Sold Date:** 18/12/2016  
<http://www.prbrealestate.com.au>

- \* Oversized living and dining space with a flowing L-shaped design
- \* Deep undercover balcony offers ample room for alfresco dining
- \* Chic renovated kitchen with stone benchtops, glass splashbacks
- \* Quality appliances including a dishwasher and ceramic cooktop
- \* Master bedroom with walk-in robe, bathroom with bath & shower



**FIRST FLOOR**



**PRB**  
Real Estate



4/27 WALTON CRESCENT,  
ABBOTSFORD

DISCLAIMER: PLANS SHOWN ARE FOR PRESENTATION PURPOSES AND ARE NOT PART OF ANY LEGAL DOCUMENT. ALL MEASUREMENTS AND FIGURES ARE APPROXIMATE.

Plans shown are only indicative of layout. Dimensions are approximate.

**Abbotsford, NSW**  
4/27 Walton Crescent