

## Chiswick, NSW

29/1 Janoa Place

1  
BED

1  
BATH

1  
CAR

PRB  
Real Estate



### A chic waterside lifestyle in a premium resort community

This oversized one-bedroom residence creates an instant impact with its generous proportions, smart modern finishes and great sense of privacy. Set within a stylish security complex, it provides a home of exceptional space and seclusion with exclusive access to the Nautica Waterfront Estate's host of resort amenities. Its highly desirable harbourside location also offers easy lifestyle convenience and is within a short stroll to foreshore parks, ferry transport and the local cafe scene.

- \* Generous open plan design featuring living and dining areas
- \* Level access to a sheltered balcony and entertainment space
- \* Indoor heated pool, spa, sauna, gym and BBQ area
- \* Large double sized bedroom fitted with built-in wardrobes

### SOLD

#### Contact:

Joe Rizzo  
0417 427 527  
Marcello Biviano  
0410 700 700

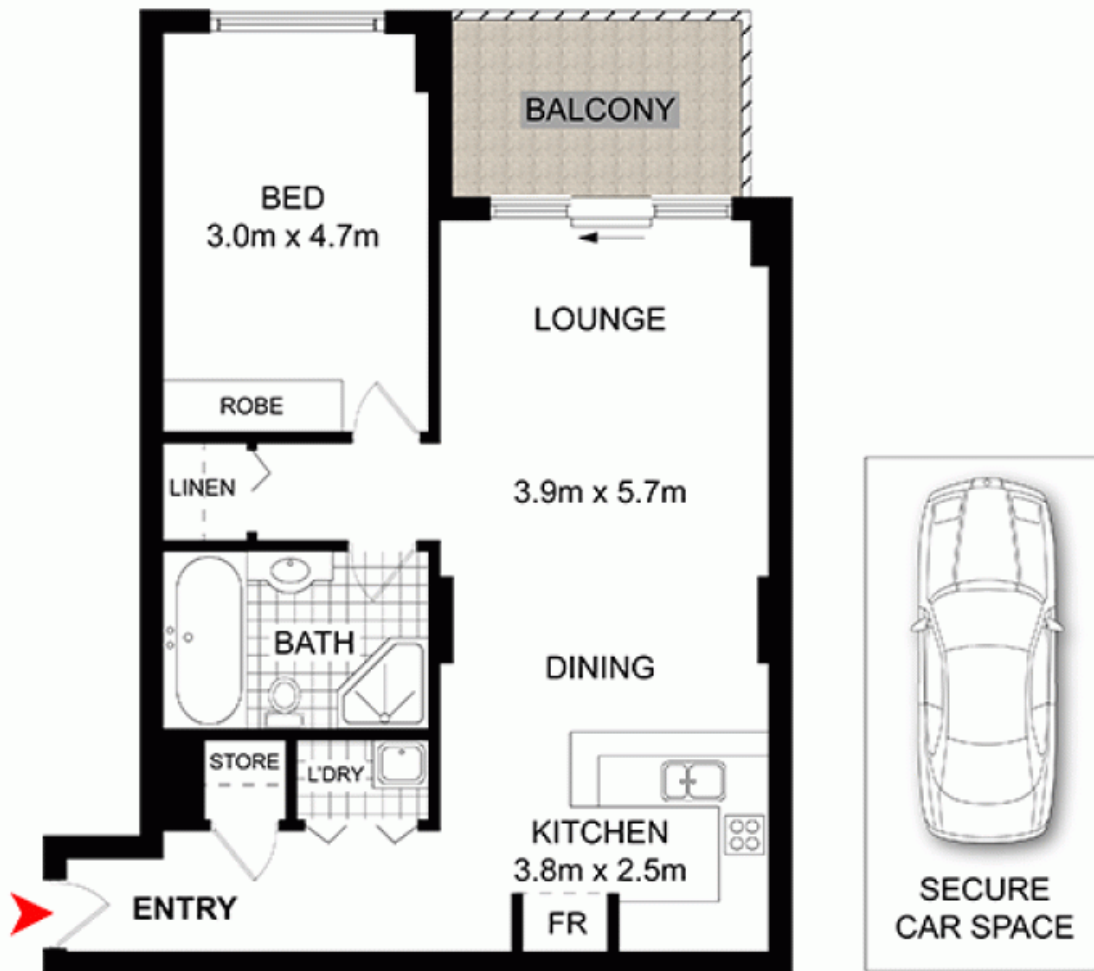
#### Type:

Unit

#### Sold Date:

07/06/2017

<http://www.prbrealestate.com.au>



**PRB**  
Real Estate



29/1 JANOA PLACE,  
CHISWICK

DISCLAIMER: WE HAVE OBTAINED ALL INFORMATION IN THIS DOCUMENT FROM SOURCES WE BELIEVE TO BE RELIABLE. HOWEVER, WE CANNOT GUARANTEE ITS ACCURACY. PROSPECTIVE PURCHASERS ARE ADVISED TO CARRY OUT THEIR OWN INVESTIGATIONS

Plans shown are only indicative of layout. Dimensions are approximate.

**Chiswick, NSW**  
29/1 Janoa Place