



Chiswick, NSW
4 Tutt Crescent

4
BED

3
BATH

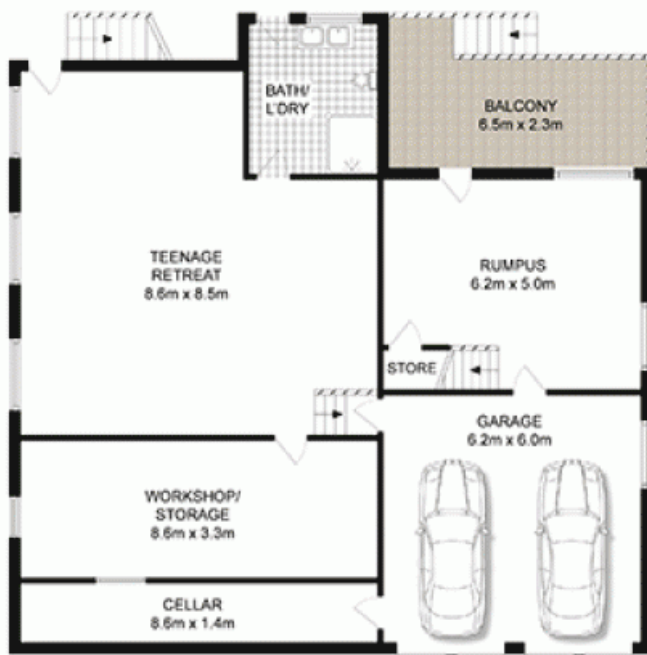
4
CAR

PRB
Real Estate



Outstanding opportunity on the Chiswick peninsula
Tightly held for almost 40 years, this spacious tri-level home enjoys a quiet setting with rear elevation and water glimpses in one of the most desirable streets on the peninsula. The home occupies approx. 580sqm with a wide 18m frontage it can easily accommodate a large family and offers ample scope to further capitalise now or in the future including potential for dual living (STCA). A stroll to waterfront parks, city buses and the ferry wharf, it promises an exceptional lifestyle in a premier location.

SOLD
Contact: Marcello Biviano
0410 700 700
Joe Rizzo
0417 427 527
Type: House
Sold Date: 03/08/2019
Land: 580m2
<http://www.prbrealestate.com.au>



GROUND FLOOR



LEVEL TWO



LEVEL ONE



SITE PLAN (not to scale)

PRB
Real Estate



**4 TUTT CRESCENT,
CHISWICK**

DISCLAIMER: WE HAVE OBTAINED ALL INFORMATION IN THIS DOCUMENT FROM SOURCES WE BELIEVE TO BE RELIABLE. HOWEVER, WE CANNOT GUARANTEE ITS ACCURACY. PROSPECTIVE PURCHASERS ARE ADVISED TO CARRY OUT THEIR OWN INVESTIGATIONS

Plans shown are only indicative of layout. Dimensions are approximate.

Chiswick, NSW
4 Tutt Crescent