



Abbotsford, NSW

3 Curtin Avenue

5
BED

4
BATH

2
CAR

PRB
Real Estate



A stunning sanctuary of modern family luxury

Showcasing quality, space and a boldly contemporary design, this deluxe residence captivates with its striking architectural presence. It has been expertly crafted to provide a spacious sanctuary of exceptional style with its flowing proportions and relaxed resort-like environment. This sought-after parkside location is footsteps to Campbell Park, and easy walking distance to Chiswick ferry wharf, local shops, schools and foreshore walks around Five Dock Bay.

- * Flowing layout featuring a spacious and bright open design
- * Separate rumpus room, upstairs living area and home office
- * Swimming pool and spa plus poolside deck and entertainment area
- * Full gourmet kitchen fitted with quality integrated appliances
- * Luxury master retreat featuring walk-in, open spa ensuite and balcony

SOLD

Contact: Marcello Biviano
0410 700 700
Joe Rizzo
0417 427 527

Type: House

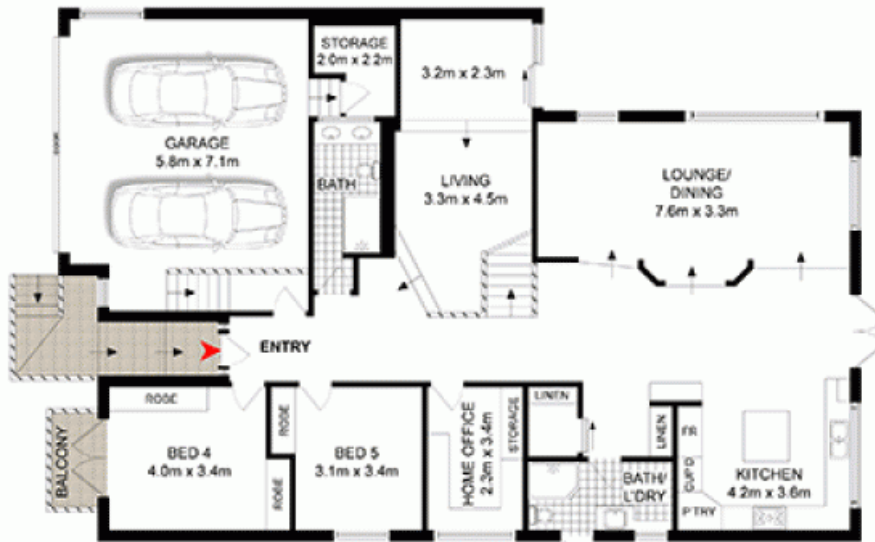
Sold Date: 14/05/2021

Land: 506m²

<http://www.prbrealestate.com.au>



FIRST FLOOR



GROUND FLOOR



SITE PLAN

PRB
Real Estate



3 CURTIN AVENUE,
ABBOTSFORD

DISCLAIMER: WE HAVE OBTAINED ALL INFORMATION IN THIS DOCUMENT FROM SOURCES WE BELIEVE TO BE RELIABLE, HOWEVER, WE CANNOT GUARANTEE ITS ACCURACY. PROSPECTIVE PURCHASERS ARE ADVISED TO CARRY OUT THEIR OWN INVESTIGATIONS.

Plans shown are only indicative of layout. Dimensions are approximate.

Abbotsford, NSW
3 Curtin Avenue