



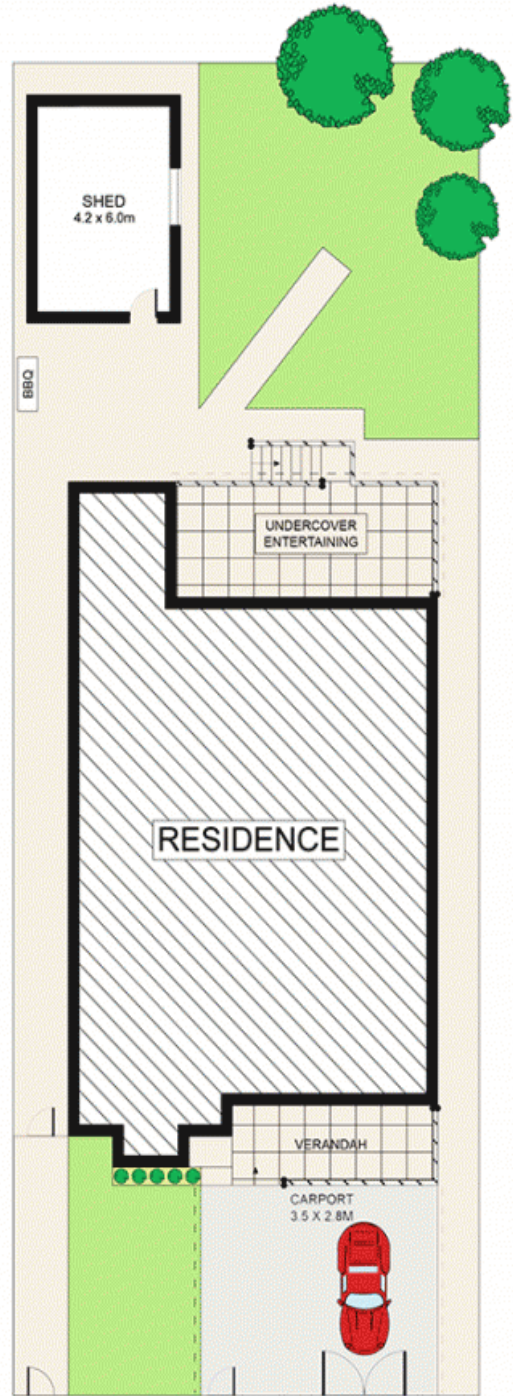
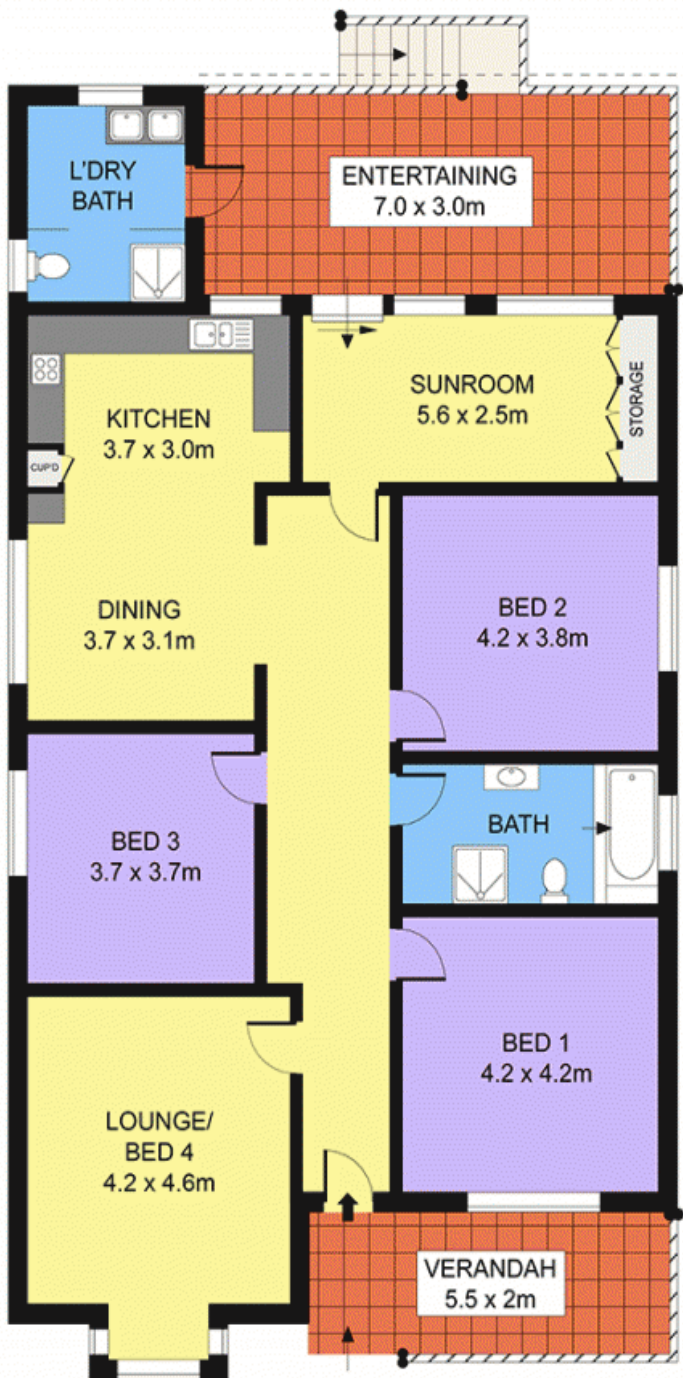
**Russell Lea, NSW**  
8 Rowley Road

<b>3</b> BED	<b>2</b> BATH	<b>1</b> CAR	<b>PRB</b> Real Estate	
-----------------	------------------	-----------------	---------------------------	--

**Original north facing family home**  
Set over a spacious single level and overflowing with period character and charm, this beautifully maintained family home is perfectly liveable as-is, offering great bones for a stylish contemporary renovation. Desirably positioned on a generous, rear to north facing block, its sought-after setting is quiet, private and just minutes stroll to Abbotsford village shopping and dining.

**SOLD**  
**Contact:** Marcello Biviano  
0410 700 700  
Joe Rizzo  
0417 427 527  
**Type:** House  
**Sold Date:** 08/08/2013  
<http://www.prbrealestate.com.au>

- \* Generous lounge plus a spacious north facing sunroom
- \* Sunroom flows out to terrace/pergola entertaining area
- \* Level, child-friendly backyard with lush grassy lawns
- \* Huge dine-in family kitchen enhanced by modern updates
- \* Granite kitchen benchtops and quality electric appliances
- \* Oversized bedrooms, neat original full sized bathroom



**SITE PLAN**  
(NOT TO SCALE)



**8 ROWLEY ROAD, RUSSELL LEA** Floorplan by Only Real Estate Ph: 1300 760 390

DISCLAIMER: PLANS SHOWN ARE FOR PRESENTATION PURPOSES AND ARE NOT PART OF ANY LEGAL DOCUMENT. ALL MEASUREMENTS AND FIGURES ARE APPROXIMATE.

Plans shown are only indicative of layout. Dimensions are approximate.

**Russell Lea, NSW**  
8 Rowley Road