



177 Frederick Street ASHFIELD NSW

4 2 2

Rarely has traditional elegance been so beautifully complemented with sophisticated modern enhancements as in this stunningly restored and refurbished Federation masterpiece. Beyond its picturesque period façade, the double brick home's grand design is laid out for a lifestyle of luxurious family entertaining, while retaining all the most exquisite hallmarks of its era. Set on a rare 550sqm land parcel, directly opposite the greenery of Hammond Park, its fabulously convenient location is a stroll to Ashfield shops and station and just minutes via rail or City West Link to the heart of the CBD.

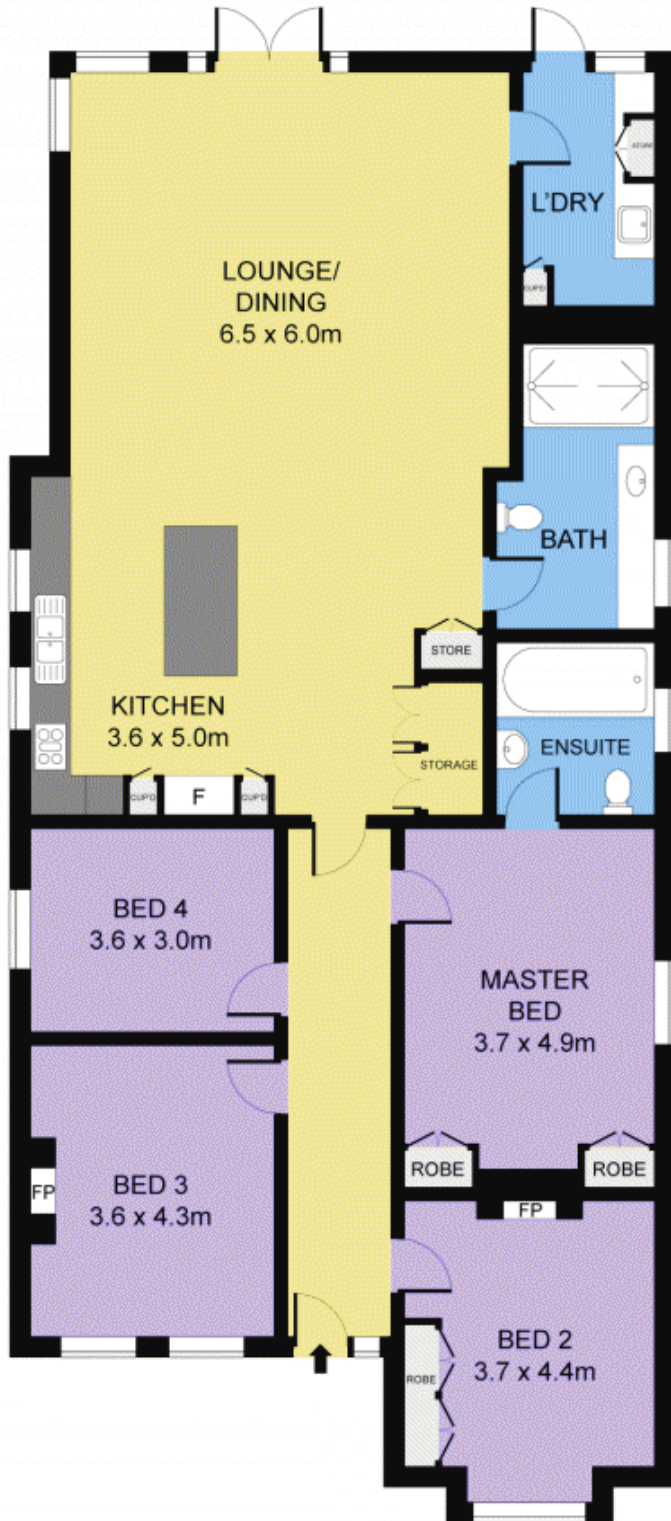
View : <https://www.prbrealestate.com.au/1497105>



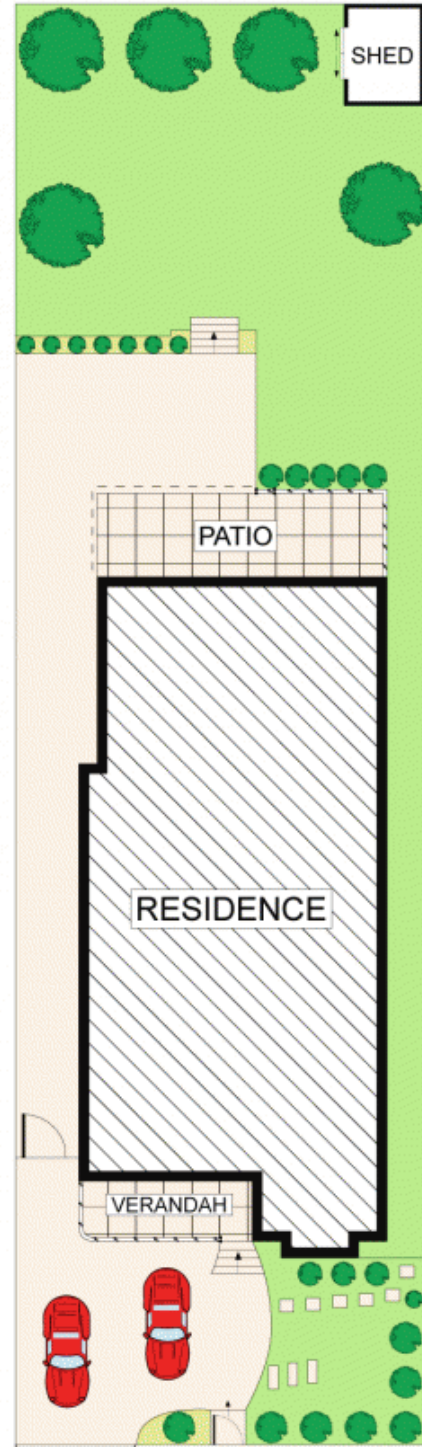
Joe Rizzo
02 9712 3938



Marcello Biviano
02 9712 3938



GROUND FLOOR



SITE PLAN (NOT TO SCALE)



177 FREDERICK STREET, ASHFIELD

DISCLAIMER: PLANS SHOWN ARE FOR PRESENTATION PURPOSES AND ARE NOT PART OF ANY LEGAL DOCUMENT. ALL MEASUREMENTS AND FIGURES ARE APPROXIMATE.