

63 Walton Crescent ABBOTSFORD NSW

5 3 1

Captivating in its sense of designer style and relaxed, resort-inspired ambience, this elegant, contemporary architect designed home boasts a striking presence on Abbotsford's most prestigious street. Cascading over three light filled levels, it offers a superb selection of living and entertaining spaces to suit any occasion. Well positioned to capture generous water glimpses and Harbour Bridge views from the upper level, its outstanding location is just 250m from the ferry wharf.

- * High ceilings, parquet floors, high calibre appointments
- * Open plan living/dining enclosed by glass bi-fold doors
- * Separate formal dining room, family room and rumpus
- * Landscaped courtyard, rear deck, spectacular front terrace
- * Sleek eat-in CaesarStone kitchen, European gas appliances

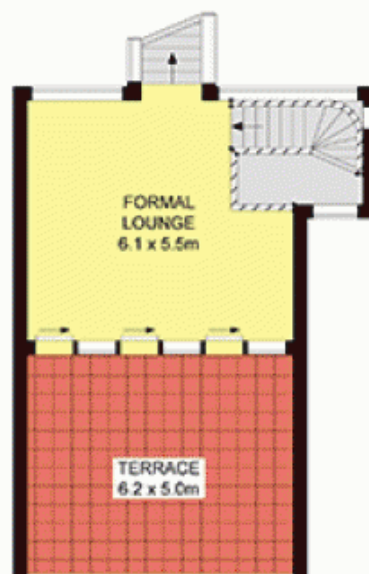
View : <https://www.prbrealestate.com.au/1516723>



Joe Rizzo
02 9712 3938



GROUND FLOOR



FIRST FLOOR



SECOND FLOOR



SITE PLAN
(NOT TO SCALE)



63 WALTON CRESCENT, ABBOTSFORD

DISCLAIMER: PLANS SHOWN ARE FOR PRESENTATION PURPOSES AND ARE NOT PART OF ANY LEGAL DOCUMENT. ALL MEASUREMENTS AND FIGURES ARE APPROXIMATE.