



**9/2 Finch Avenue CONCORD NSW**

2 1 1

Immersed in a wonderfully green, leafy outlook thanks to an enviable position opposite St Lukes Park, this elegantly renovated apartment offers the perfect blend of smart contemporary styling and ultra-convenient living. Just footsteps to the foreshore at Canada Bay, this idyllic, ready-to-move-into home or investment is metres from city buses and strolling distance to Majors Bay Road's cosmopolitan café and dining precinct.

**Price** : \$ 575,000

**View** : <https://www.prbrealestate.com.au/1988219>

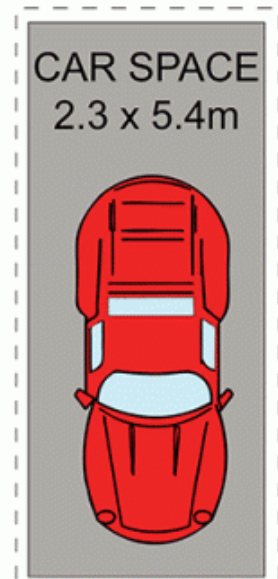
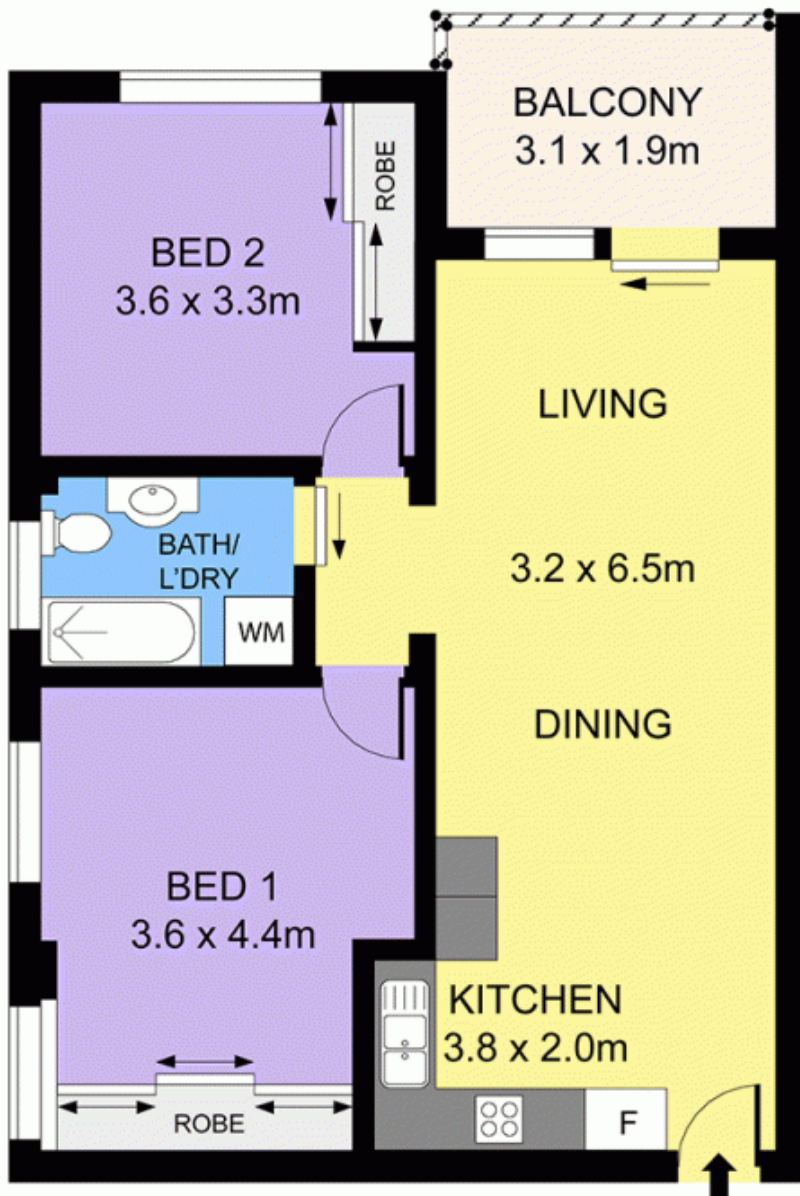
- \* Open plan design, polished timber floors throughout
- \* Generous undercover balcony capturing parkland views
- \* Stylish modern kitchen w/ steel oven and ceramic cooktop
- \* Fully tiled designer bathroom with mosaic feature wall
- \* Built-in wardrobes in both bedrooms, oversized master
- \* Internal laundry facilities and split system air conditioning
- \* Easy cul-de-sac access to an undercover parking space
- \* Stroll to tennis courts, golf course and foreshore walks



**Marcello Biviano**  
02 9712 3938



**Joe Rizzo**  
02 9712 3938



## TOP LEVEL



9/2 FINCH AVENUE, CONCORD

DISCLAIMER: PLANS SHOWN ARE FOR PRESENTATION PURPOSES AND ARE NOT PART OF ANY LEGAL DOCUMENT. ALL MEASUREMENTS AND FIGURES ARE APPROXIMATE.