



73 Carlisle Street LEICHHARDT NSW

3 2 1

Peacefully tucked away on the quiet end of the street yet just a short walk from the cosmopolitan delights of Norton Street, this solid single level residence presents as an exciting entry level opportunity to capitalise on the sought-after Leichhardt market. Set on a rare 329sqm complete with a secure backyard, it offers enormous scope to enhance, extend (STCA) and take full advantage of its prime location, walking distance to the Marion light rail station.

Price : \$ 1,300,000

View : <https://www.prbrealestate.com.au/1991503>

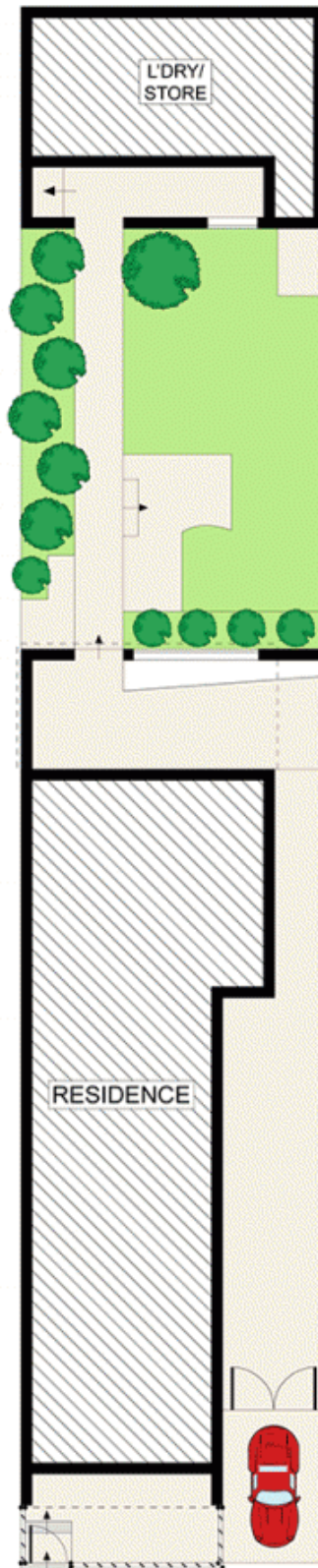
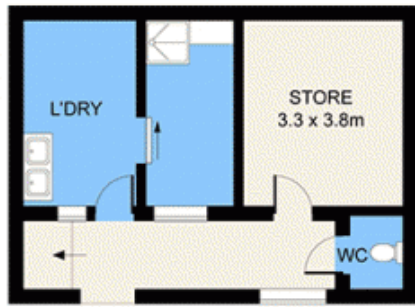
- * Bright and spacious central living area, dine-in kitchen
- * Kitchen updated w/ modern stainless steel gas appliances
- * Kitchen opens directly to rear undercover alfresco terrace
- * Backyard of exceptional proportions, generous lawn area
- * Two bedrooms off a traditional hallway with high ceilings
- * Third bedroom at the rear with a spacious adjoining study



Marcello Biviano
02 9712 3938



Joe Rizzo
02 9712 3938



73 CARLISLE STREET, LEICHHARDT

DISCLAIMER: PLANS SHOWN ARE FOR PRESENTATION PURPOSES AND ARE NOT PART OF ANY LEGAL DOCUMENT. ALL MEASUREMENTS AND FIGURES ARE APPROXIMATE.