



1/84 Hampden Road RUSSELL LEA NSW

2 1 2

An ambiance of boutique luxury defines this beautifully renovated 134sqm apartment, set on the ground floor of a small block of 10 with its own private street front entrance. Showcasing chic designer inclusions, ample entertaining space and a flowing design, it boasts a central location, city buses at the doorstep with waterfront parkland within metres and Abbotsford village shops and school only a short stroll away.

- * Generous open plan living, dining and eat-in kitchen
- * Wide, garden-facing balcony sized for alfresco dining
- * CaesarStone island kitchen featuring stainless steel appliances
- * Huge master bedroom w/built in, 2nd bedroom w/ walk-in
- * Elegantly renovated bathroom with bath and shower
- * Internal laundry, lock-up garage with storage plus adjacent car space

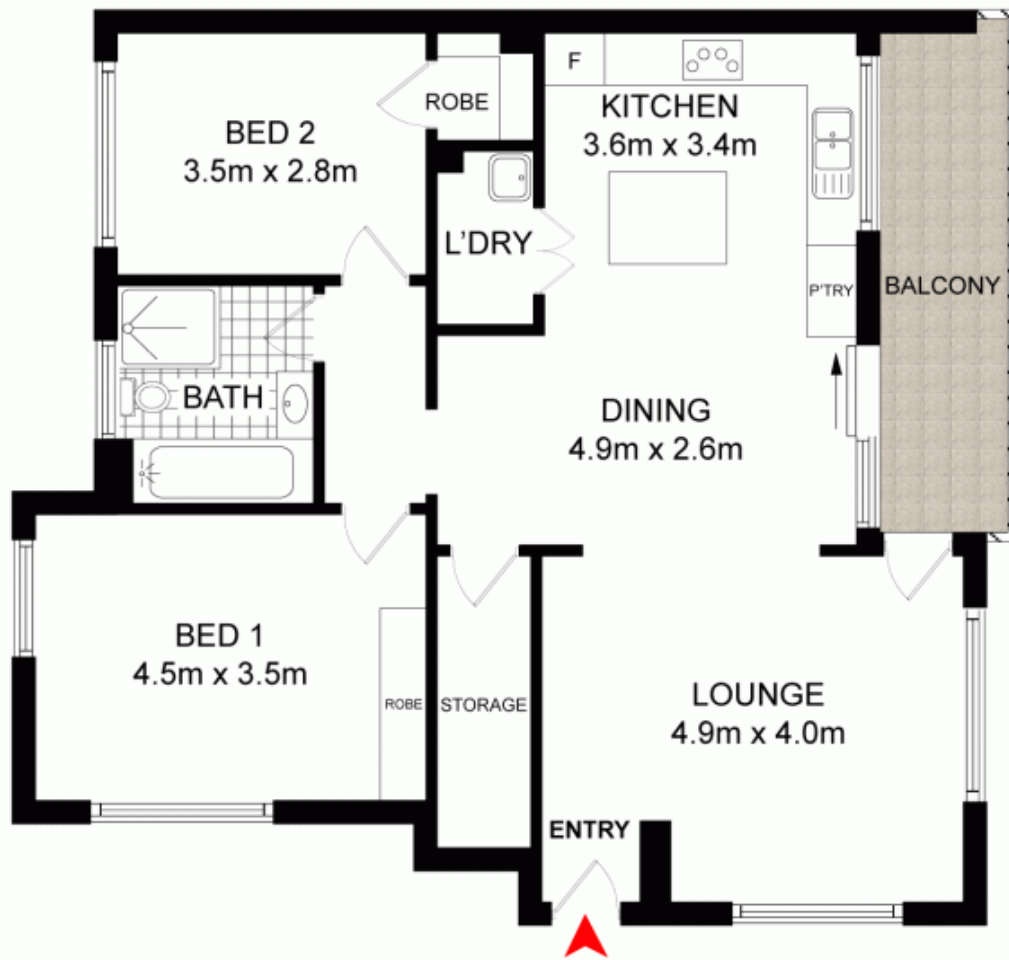
View : <https://www.prbrealestate.com.au/2494146>



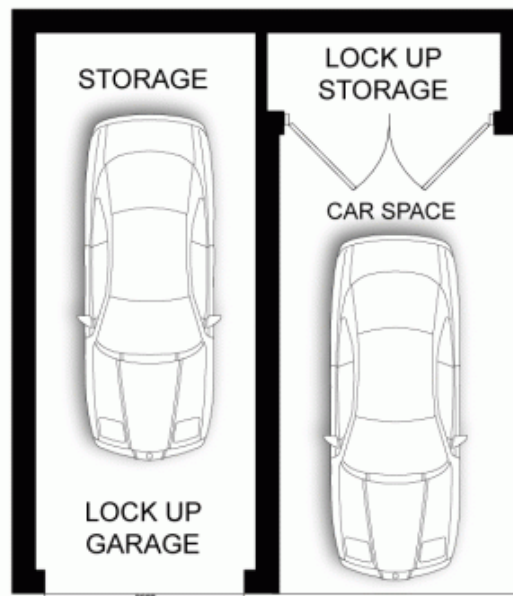
Joe Rizzo
02 9712 3938



Marcello Biviano
02 9712 3938



GROUND FLOOR



PRB
Real Estate



0 1m 2m 3m 4m



**1/84 HAMPDEN ROAD
RUSSELL LEA**

DISCLAIMER: PLANS SHOWN ARE FOR PRESENTATION PURPOSES AND ARE NOT PART OF ANY LEGAL DOCUMENT. ALL MEASUREMENTS AND FIGURES ARE APPROXIMATE.