



3/4 Harbourview Crescent ABBOTSFORD NSW

3 2 2

Blessed with a premier corner position in the waterfront 'Flinders' building, set within the resort-inspired 'Abbotsford Cove', this sensational house-sized apartment is immersed in incredible unobstructed views over the boat-filled waters of Abbotsford Bay and the adjoining Foreshore Park. Drenched in light and surrounded by sublimely manicured grounds, each of the oversized, elegantly appointed rooms boast views opening out to the water or lush landscaped gardens.

Price : \$ 2,450,000
Building Size : 236 sqm
View : <https://www.prbrealestate.com.au/2642873>

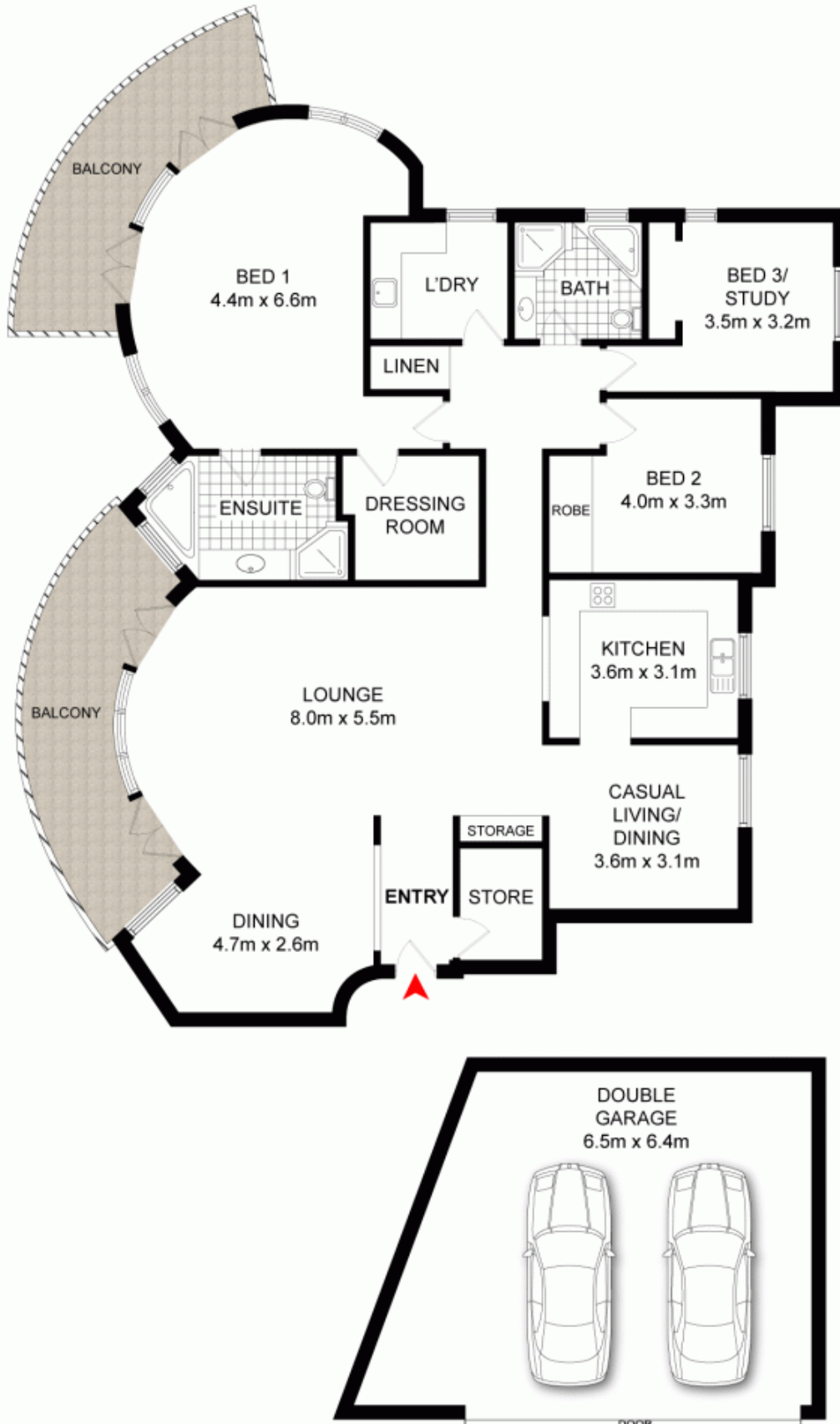
- * Open plan living, tinted windows provide privacy & perfect views
- * Vast glass-fronted entertainers terrace with retractable awning
- * Luxe master suite with its own huge balcony and walk-in robe
- * Dine-in granite kitchen, full suite of quality Miele



Marcello Biviano
02 9712 3938



Joe Rizzo
02 9712 3938



PRB
Real Estate



0 1m 2m 3m 4m



3/4 HARBOURVIEW CRESCENT,
ABBOTSFORD

DISCLAIMER: PLANS SHOWN ARE FOR PRESENTATION PURPOSES AND ARE NOT PART OF ANY LEGAL DOCUMENT. ALL MEASUREMENTS AND FIGURES ARE APPROXIMATE.