

10 Heath Street FIVE DOCK NSW

5 2 2

Beautifully retained Federation era details and generous upper level city skyline and Harbour Bridge glimpses define this truly substantial, freestanding family-sized home in a truly enviable waterside location, virtually opposite bayfront Timbrell Park and steps from the scenic boulevards of the Bay Run. With multiple living areas over two levels, its interiors blend exquisite traditional craftwork with a flowing floorplan, elegant high end updates and a landscaped entertaining setting.

- * Original timber floorboards, leadlights, high ornate ceilings
- * Lounge with fireplace flows to open plan kitchen and dining
- * Upstairs retreat opens to a wide balcony with city & park views
- * Elegant granite kitchen, high end stainless steel gas

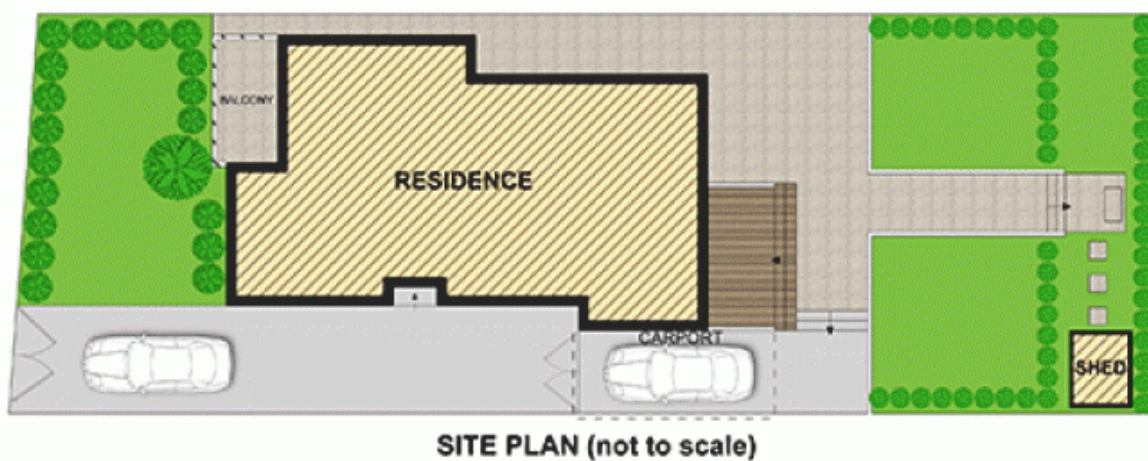
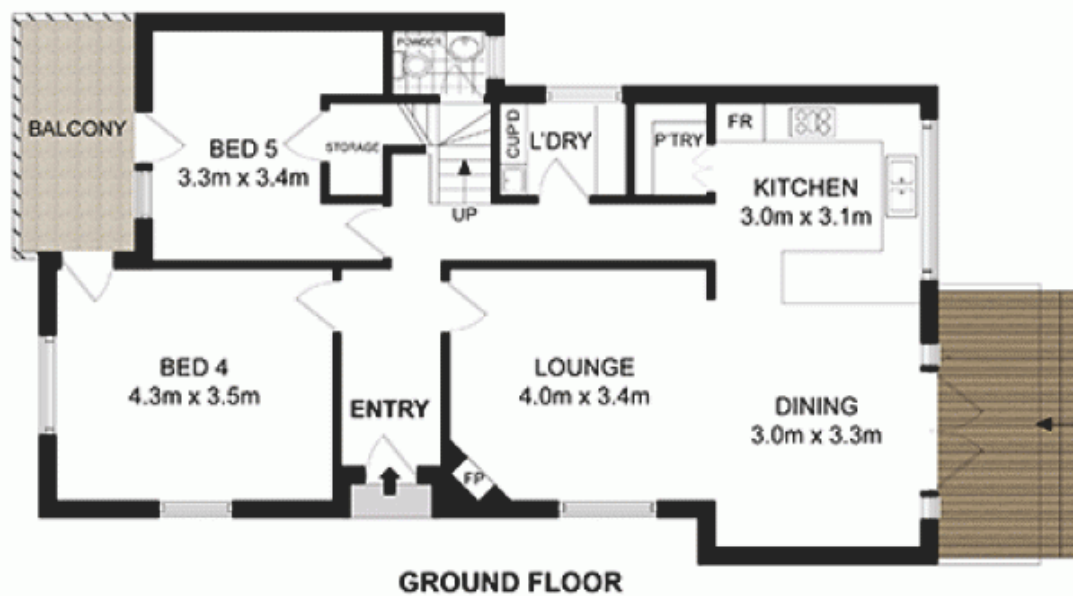
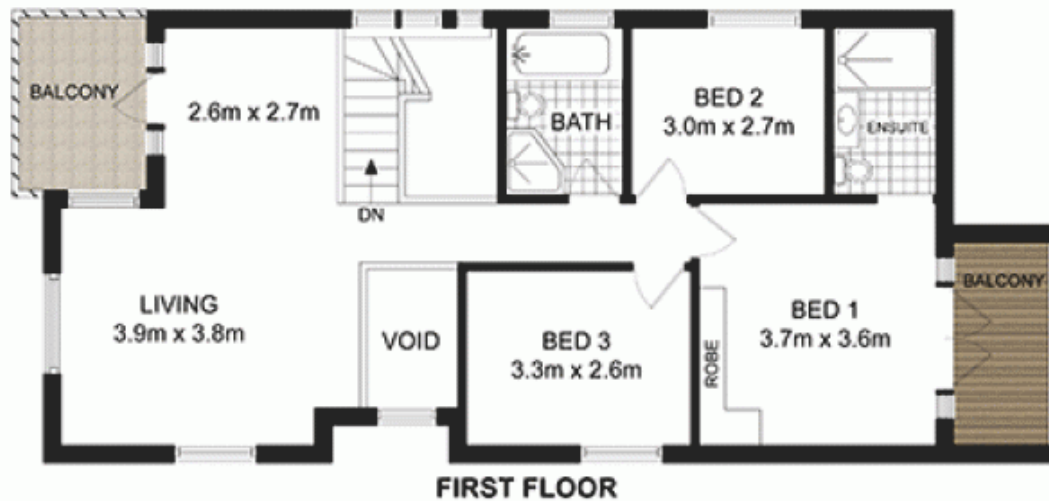
View : <https://www.prbrealestate.com.au/2662772>



Joe Rizzo
02 9712 3938



Marcello Biviano
02 9712 3938



PRB
Real Estate



0 1m 2m 3m 4m



**10 HEATH STREET,
FIVE DOCK**

DISCLAIMER: PLANS SHOWN ARE FOR PRESENTATION PURPOSES AND ARE NOT PART OF ANY LEGAL DOCUMENT ALL MEASUREMENTS AND FIGURES ARE APPROXIMATE.