



8/6 Bortfield Drive CHISWICK NSW

2 1 1

Prestigiously positioned at the tip of the peninsula, this spectacularly updated apartment is literally seconds away from the water's edge and metres to Chiswick Ferry Wharf. Situated on the first floor of a sought-after security building, the apartment is directly opposite Armitage Reserve on Abbotsford Bay and is a short stroll to buses, local shops and cafes on Blackwall Point Road.

- * Living/dining area flows to balcony with filtered views
- * Modern gas kitchen with ample storage and breakfast bench
- * Original bathroom with bath and shower, internal laundry
- * Two north-east facing bedrooms, main with built ins
- * Air Conditioning, Covered single car space and storeroom
- * Quiet one-way street walk to Chiswick village shops and buses

Price : \$ 750,000

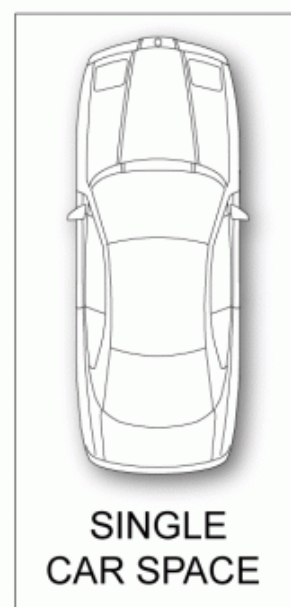
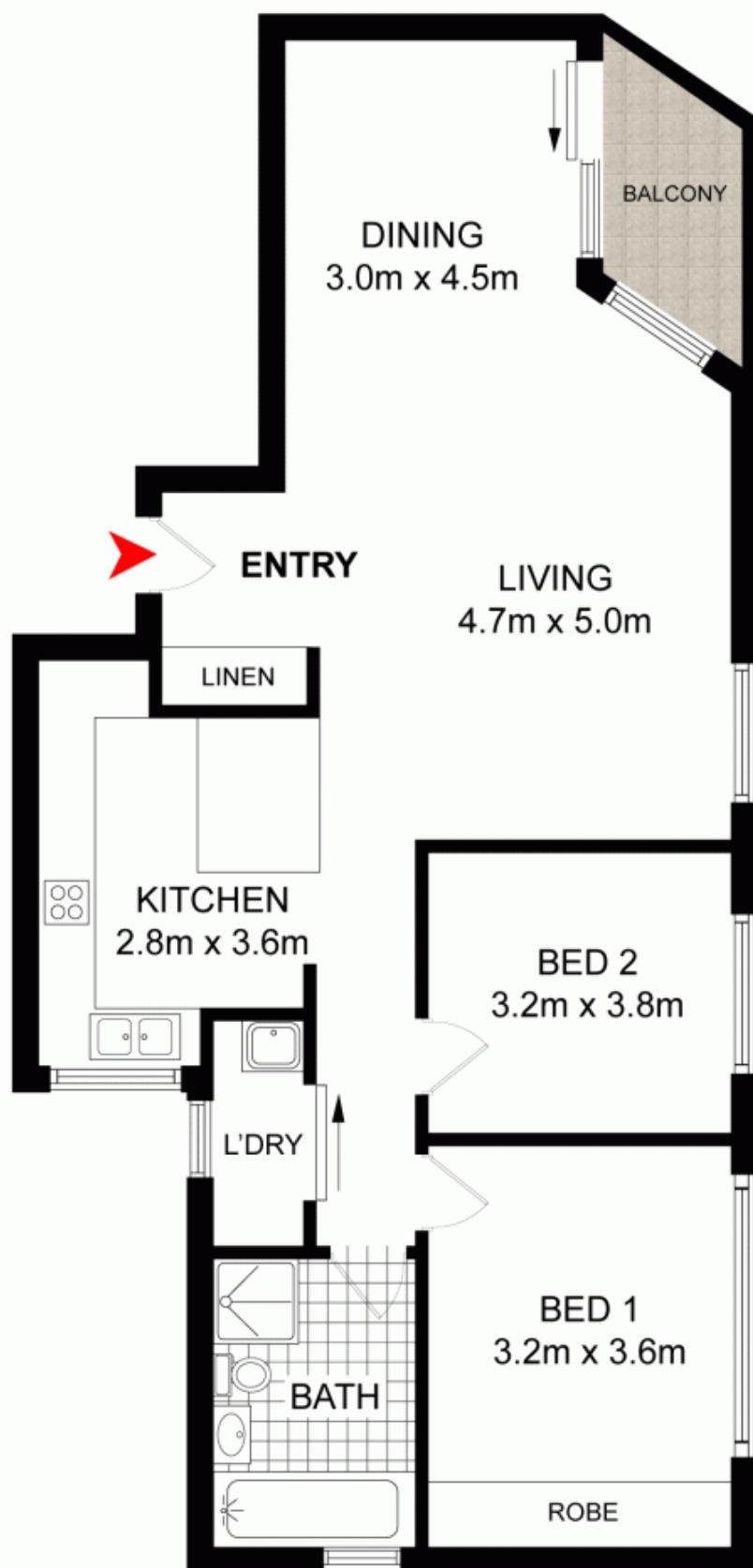
View : <https://www.prbrealestate.com.au/2707769>



Marcello Biviano
02 9712 3938



Joe Rizzo
02 9712 3938



PRB
Real Estate



0 1m 2m 3m 4m



8/6 BORTFIELD DRIVE,
CHISWICK

DISCLAIMER: PLANS SHOWN ARE FOR PRESENTATION PURPOSES AND ARE NOT PART OF ANY LEGAL DOCUMENT. ALL MEASUREMENTS AND FIGURES ARE APPROXIMATE.