



1/8 Bortfield Drive CHISWICK NSW

2 1 1

This appealingly spacious two bedroom, one bathroom apartment is an attractive offering for first home buyers, downsizers and investors ready to move into now while offering future potential to add your own personalised modern touches. Set on the first floor, it enjoys an abundance of streaming natural light. Nestled between Abbotsford and Five Dock bays and just 150m to Chiswick Ferry Wharf, the location is quiet yet remarkably convenient, an easy few minutes stroll to city buses, local shops and cafes.

- *Spacious light filled interiors plus large balcony
- *Separate lounge and dining areas
- *Updated kitchen with internal Laundry
- *Main bedroom features built-in wardrobes
- *Original bathroom with bath and shower
- *Well maintained block with pool, Garage with Storage

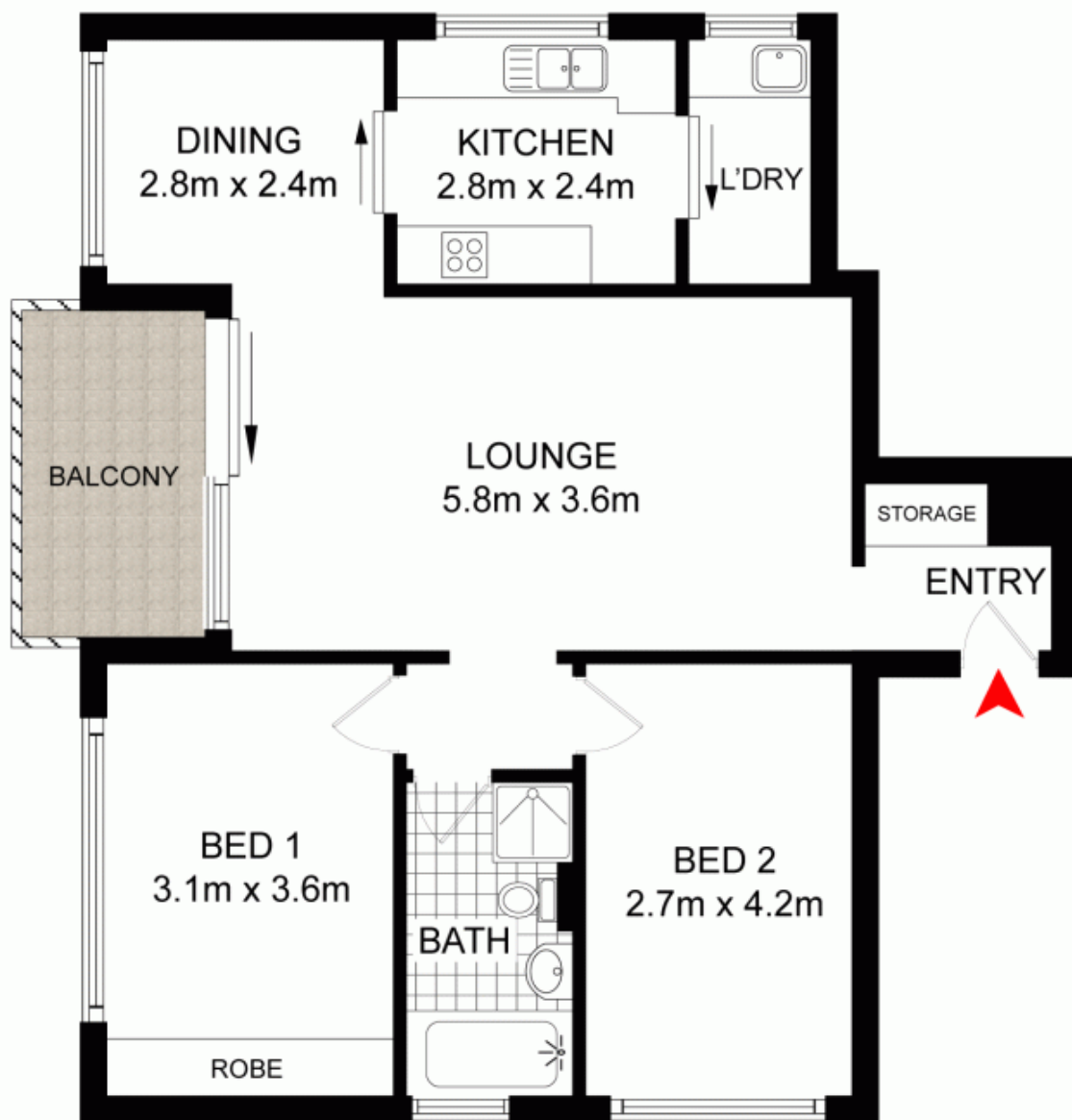
View : <https://www.prbrealestate.com.au/2988487>



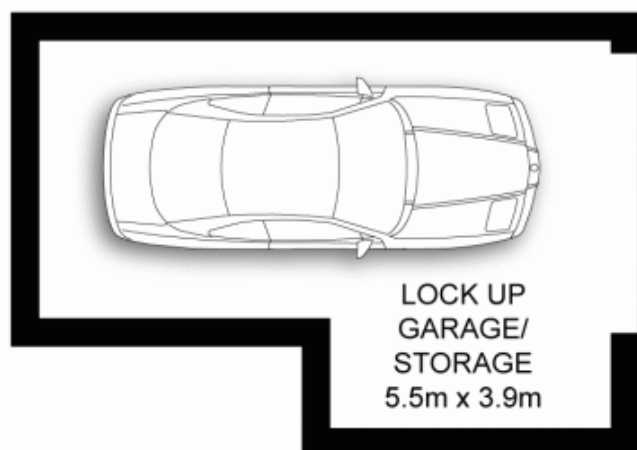
Marcello Biviano
02 9712 3938



Joe Rizzo
02 9712 3938



GROUND FLOOR



PRB
Real Estate



0 1m 2m 3m 4m



1/8 BORTFIELD DRIVE,
CHISWICK

DISCLAIMER: PLANS SHOWN ARE FOR PRESENTATION PURPOSES AND ARE NOT PART OF ANY LEGAL DOCUMENT. ALL MEASUREMENTS AND FIGURES ARE APPROXIMATE.