



4/2 Walton Crescent ABBOTSFORD NSW

4  3  2 

Experience waterfront apartment living in absolute luxury from this house-sized contemporary haven on the shores of Abbotsford Bay. In an exclusive block of only 5, it's immersed in intimate panoramic vistas over sweeping waterways, bobbing boats and picturesque sandy coves. No expense has been spared to transform the apartment into the ultimate entertainer's retreat, featuring as-new interior design by Coco Republic, top-of-the-line inclusions throughout and an effortless flow to a truly magnificent alfresco setting. Complete with its own private marina berth, this rare offering epitomises Sydney's harbourside lifestyle at its finest.

* Light-drenched open plan living space, enclosed by wraparound glass

* Huge timber deck overlooks Abbotsford Bay and the Gladesville Bridge

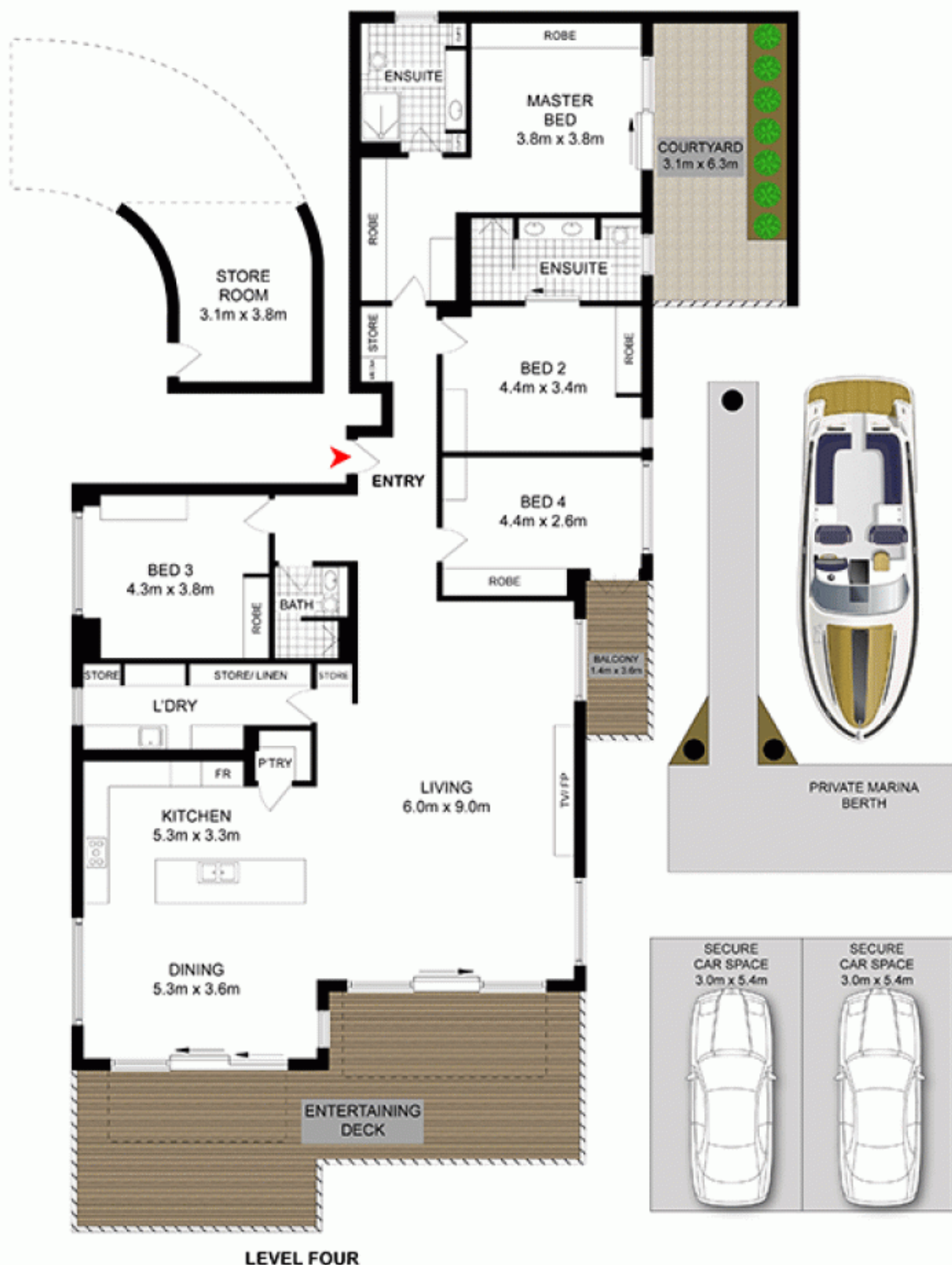
View : <https://www.prbrealestate.com.au/3057400>



Joe Rizzo
02 9712 3938



Marcello Biviano
02 9712 3938



PRB
Real Estate



0 1m 2m 3m 4m



**4/2 WALTON CRESCENT,
ABBOTSFORD**

DISCLAIMER: PLANS SHOWN ARE FOR PRESENTATION PURPOSES AND ARE NOT PART OF ANY LEGAL DOCUMENT ALL MEASUREMENTS AND FIGURES ARE APPROXIMATE.