



**26/12 Walton Crescent ABBOTSFORD NSW**

3  2  2 

Immersed in a breathtaking harbour panorama that takes in spectacular views over Abbotsford Bay, the Gladesville Bridge and city skyline, this top floor apartment offers a superb waterfront opportunity. It makes a lasting impression; flooded with natural light and with inspiring water views from every window, this comfortable home provides excellent potential to update or redesign to make the most of this prized waterfront position.

\*Ideal north easterly aspect with boat filled views over the harbour from every window

\*A generous and well-designed floorplan offers easy-care single level living

\*Bright and breezy throughout with open lounge and dining area

\*Sunlit balcony accessed from the living space and main bedroom

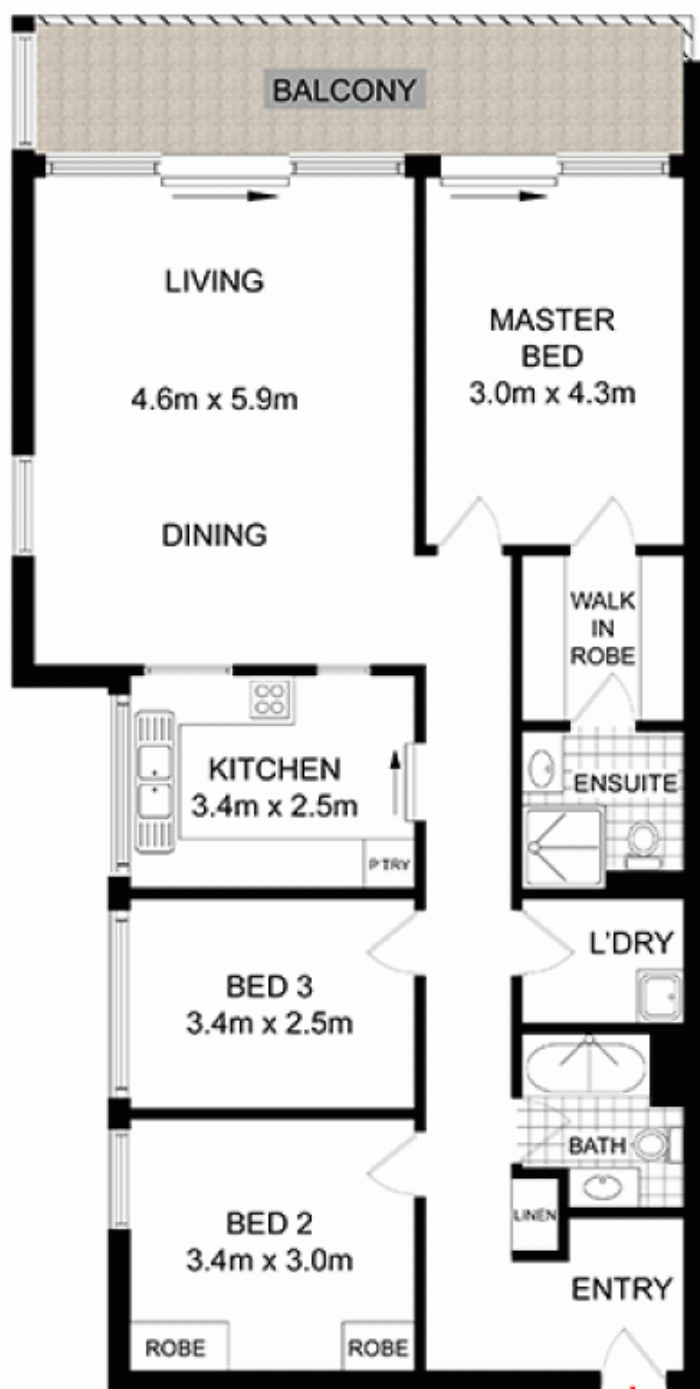
**View :** <https://www.prbrealestate.com.au/3666703>



**Joe Rizzo**  
02 9712 3938



**Marcello Biviano**  
02 9712 3938



**TOP FLOOR**



**PRB**  
Real Estate



0 1m 2m 3m 4m



**26/12 WALTON CRESCENT,  
ABBOTSFORD**

DISCLAIMER: WE HAVE OBTAINED ALL INFORMATION IN THIS DOCUMENT FROM SOURCES WE BELIEVE TO BE RELIABLE, HOWEVER, WE CANNOT GUARANTEE ITS ACCURACY. PROSPECTIVE PURCHASERS ARE ADVISED TO CARRY OUT THEIR OWN INVESTIGATIONS