



436 Great North Road ABBOTSFORD NSW

5 2 4

A superb vantage point in one of Abbotsford's most exclusive waterside enclaves affords this expansive residence a spectacular panorama over Sydney's celebrated harbour surrounds. It features a flowing two-level layout with light filled open living spaces and private entertainment areas set against an iconic backdrop of the Harbour Bridge and city skyline. This impressive property is presented in great condition and offers buyers the opportunity to further update or renovate to truly capitalise on its prestige location.

- * Expansive open living spaces with lounge and dining areas
- * Wide alfresco terrace commanding stunning harbour outlooks
- * Landscaped rear garden and lawn plus a private front courtyard

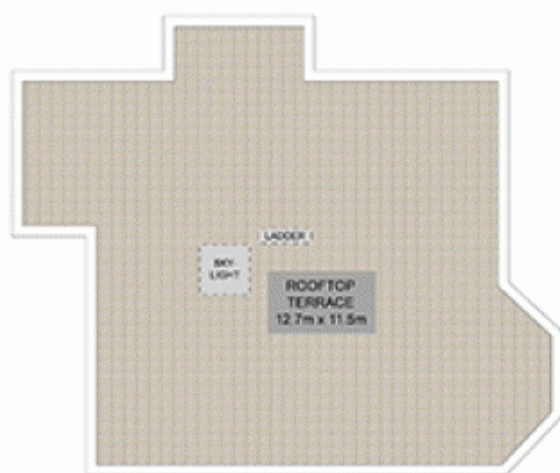
View : <https://www.prbrealestate.com.au/3776973>



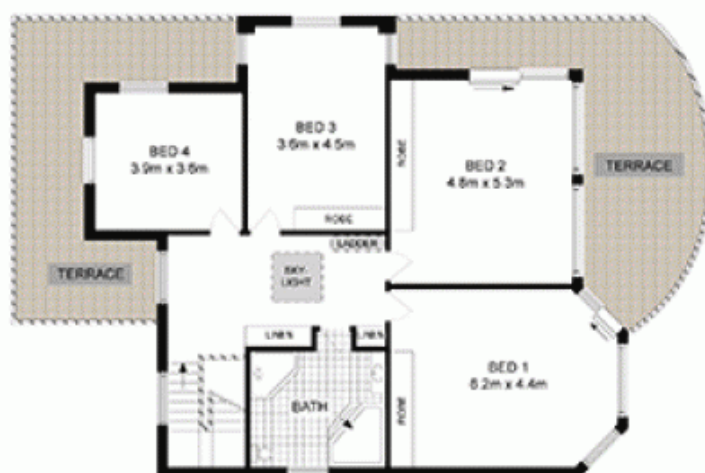
Marcello Biviano
02 9712 3938



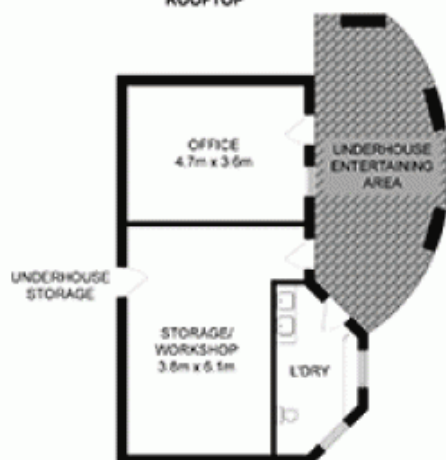
Joe Rizzo
02 9712 3938



ROOFTOP



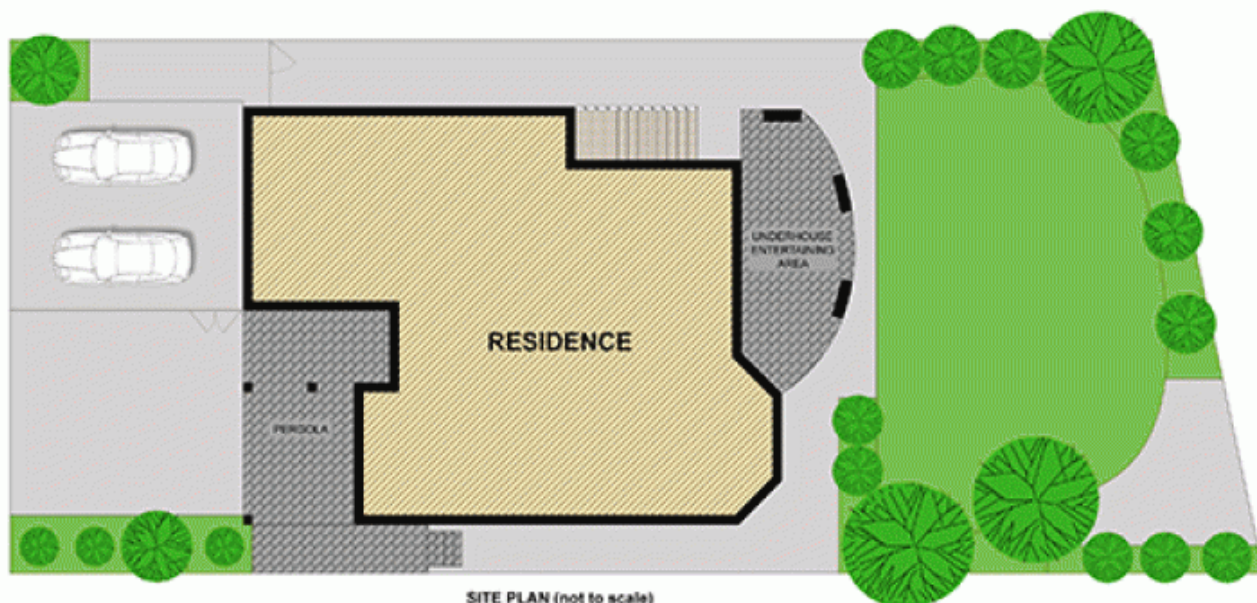
FIRST FLOOR



LOWER GROUND FLOOR



GROUND FLOOR



SITE PLAN (not to scale)

PRB
Real Estate



436 GREAT NORTH ROAD,
ABBOTSFORD

DISCLAIMER: WE HAVE OBTAINED ALL INFORMATION IN THIS DOCUMENT FROM SOURCES WE BELIEVE TO BE RELIABLE. HOWEVER, WE CANNOT GUARANTEE ITS ACCURACY. PROSPECTIVE PURCHASERS ARE ADVISED TO CARRY OUT THEIR OWN INVESTIGATIONS.