






6/3 Harbourview Crescent ABBOTSFORD NSW

4  3  2 

Created to provide an exceptionally spacious home with light filled interiors, house-sized proportions and mesmerising panoramas over the Parramatta River, this impressive 'penthouse' sets a high benchmark for waterfront living. It offers a unique two-storey sanctuary of style and sophistication with an impressive 391sqm in/outdoor area and an uplifting sense of light, space and privacy. This extraordinary residence is one of the best properties to come onto the Abbotsford market and is enhanced by its fantastic lifestyle location that has direct access to the foreshore walkway, parklands and Abbotsford Cove's resort amenities.

* Two-level residence with direct lift access to a grand entrance foyer

* An elevated northerly aspect and uninterrupted views over the water

Land Size : 391 sqm

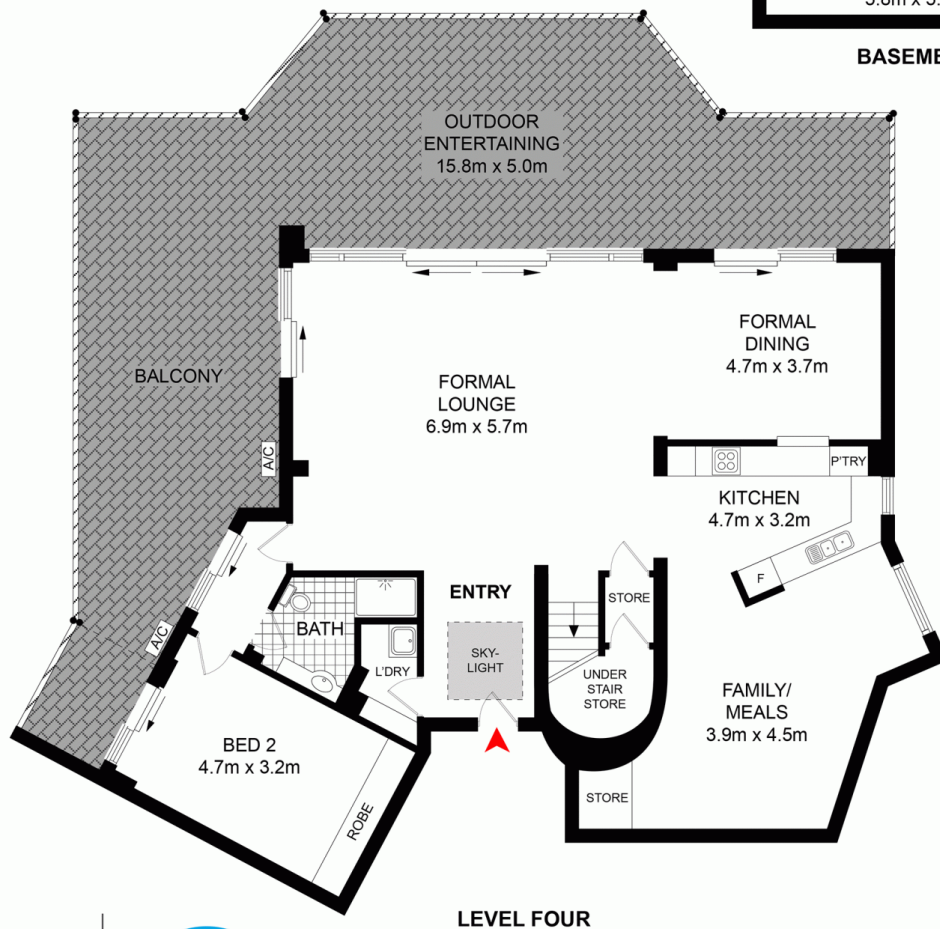
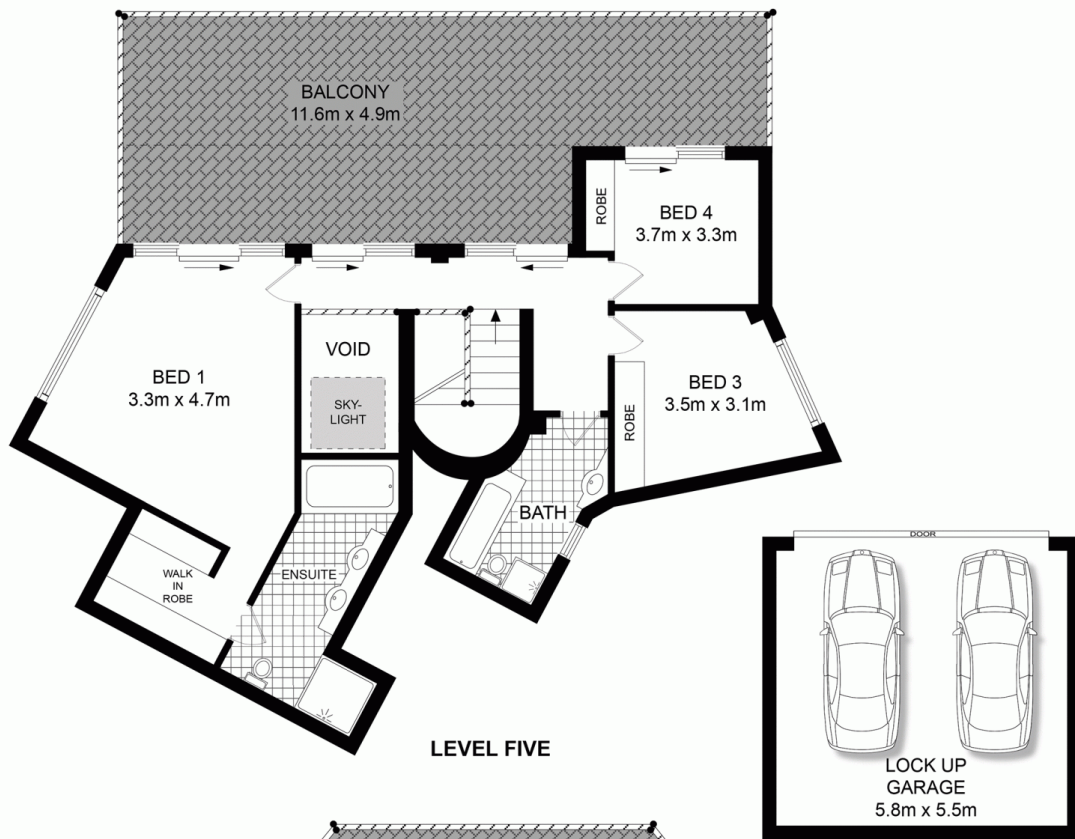
View : <https://www.prbrealestate.com.au/4870131>



Marcello Biviano
02 9712 3938



Joe Rizzo
02 9712 3938



PRB
Real Estate



0 1m 2m 3m 4m



6/3 HARBOURVIEW CRESCENT
ABBOTSFORD

DISCLAIMER: WE HAVE OBTAINED ALL INFORMATION IN THIS DOCUMENT FROM SOURCES WE BELIEVE TO BE RELIABLE; HOWEVER, WE CANNOT GUARANTEE ITS ACCURACY. PROSPECTIVE PURCHASERS ARE ADVISED TO CARRY OUT THEIR OWN INVESTIGATIONS