



46 Lenore Street RUSSELL LEA NSW

2 1 2

This freestanding residence offers an exciting opportunity to acquire a generous house and land package in one of Russell Lea’s most sought-after streets. Set on an impressive 613sqm block the home comes with DA Approved plans for a two storey 4 bedroom home with a multiple living areas, pool, cabana and lock up garage. This popular neighborhood is within easy walking distance to all of the area’s lifestyle amenities including the Bay Run, schools, parks and bus transport.

Land Size : 613 sqm
View : <https://www.prbrealestate.com.au/5977182>

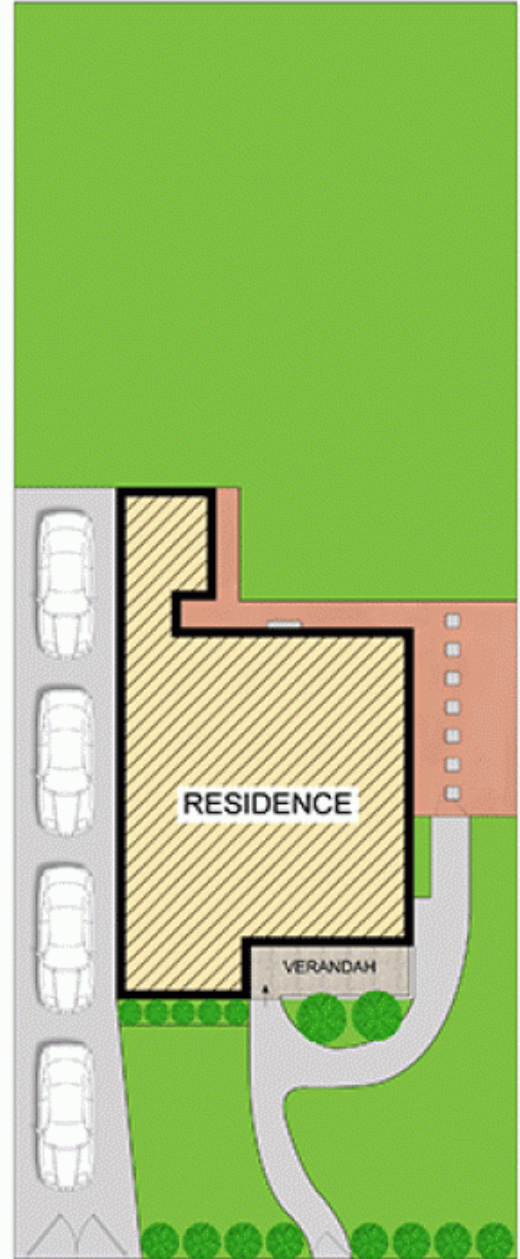
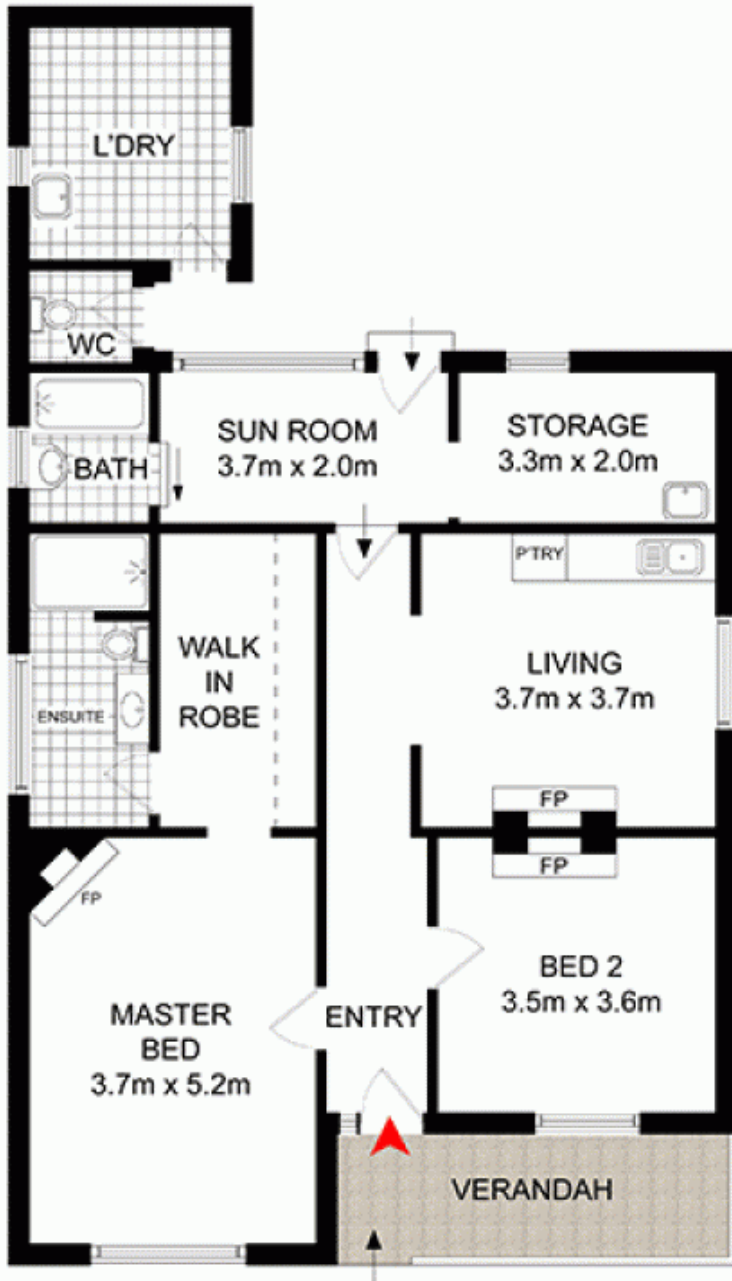
- * Occupying a deep level block with an ideal northerly rear aspect
- * Two good-sized bedrooms, main with en-suite and walk in robe
- * Driveway parking for multiple cars, huge rear yard
- * Potential duplex development subject to council approval



Joe Rizzo
 02 9712 3938



Marcello Biviano
 02 9712 3938



PRB
Real Estate



46 LENORE STREET,
RUSSELL LEA

DISCLAIMER: WE HAVE OBTAINED ALL INFORMATION IN THIS DOCUMENT FROM SOURCES WE BELIEVE TO BE RELIABLE; HOWEVER, WE CANNOT GUARANTEE ITS ACCURACY. PROSPECTIVE PURCHASERS ARE ADVISED TO CARRY OUT THEIR OWN INVESTIGATIONS