



**3 Curtin Avenue ABBOTSFORD NSW**

5 4 2

Showcasing quality, space and a boldly contemporary design, this deluxe residence captivates with its striking architectural presence. It has been expertly crafted to provide a spacious sanctuary of exceptional style with its flowing proportions and relaxed resort-like environment. This sought-after parkside location is footsteps to Campbell Park, and easy walking distance to Chiswick ferry wharf, local shops, schools and foreshore walks around Five Dock Bay.

- \* Flowing layout featuring a spacious and bright open design
- \* Separate rumpus room, upstairs living area and home office
- \* Swimming pool and spa plus poolside deck and entertainment area
- \* Full gourmet kitchen fitted with quality integrated

**Land Size** : 506 sqm  
**View** : <https://www.prbrealestate.com.au/6386051>



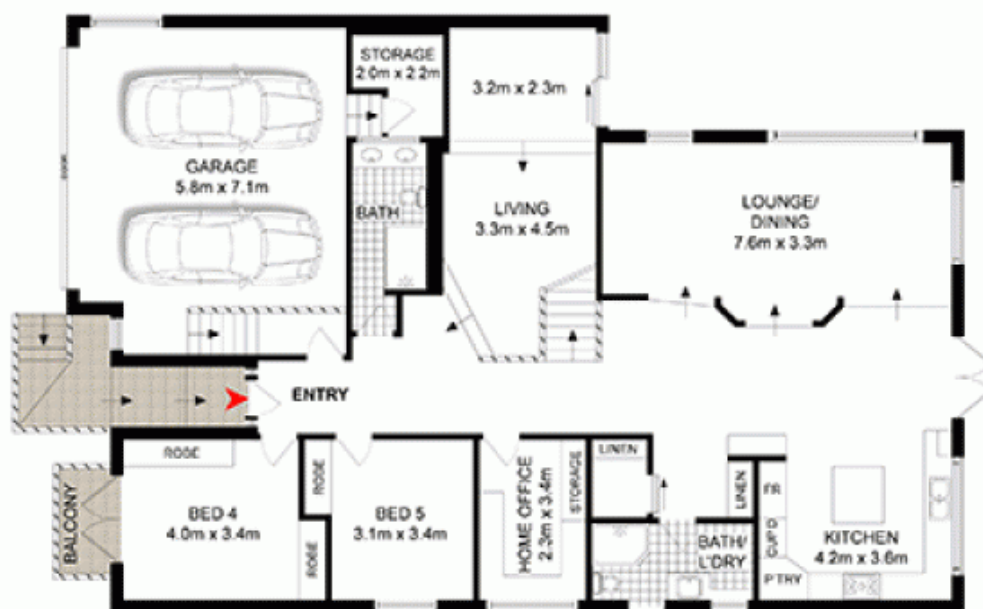
**Marcello Biviano**  
**02 9712 3938**



**Joe Rizzo**  
**02 9712 3938**



FIRST FLOOR



GROUND FLOOR



SITE PLAN

**PRB**  
Real Estate



**3 CURTIN AVENUE,  
ABBOTSFORD**

DISCLAIMER: WE HAVE OBTAINED ALL INFORMATION IN THIS DOCUMENT FROM SOURCES WE BELIEVE TO BE RELIABLE; HOWEVER, WE CANNOT GUARANTEE ITS ACCURACY. PROSPECTIVE PURCHASERS ARE ADVISED TO CARRY OUT THEIR OWN INVESTIGATIONS.