



5/25 Walton Crescent ABBOTSFORD NSW

3  2  2 

Light, space and stunning views combine in this freshly renovated top floor residence to create a quality home of excellent lifestyle convenience. Ideally positioned on the north-east corner of a boutique building, it is smartly finished throughout and set against an elevated panorama that stretches over the Gladesville Bridge. This is a superb property for buyers or investors seeking a fully modernised apartment that's footsteps to the water's edge and close to the heart of Abbotsford.

- * Bright and airy with an open design and no common walls
- * Sunlit north east facing balcony that flows off the living area
- * Brand-new kitchen with stone benchtops and quality s/steel fittings
- * Three bedrooms include a large main with built ins and designer ensuite

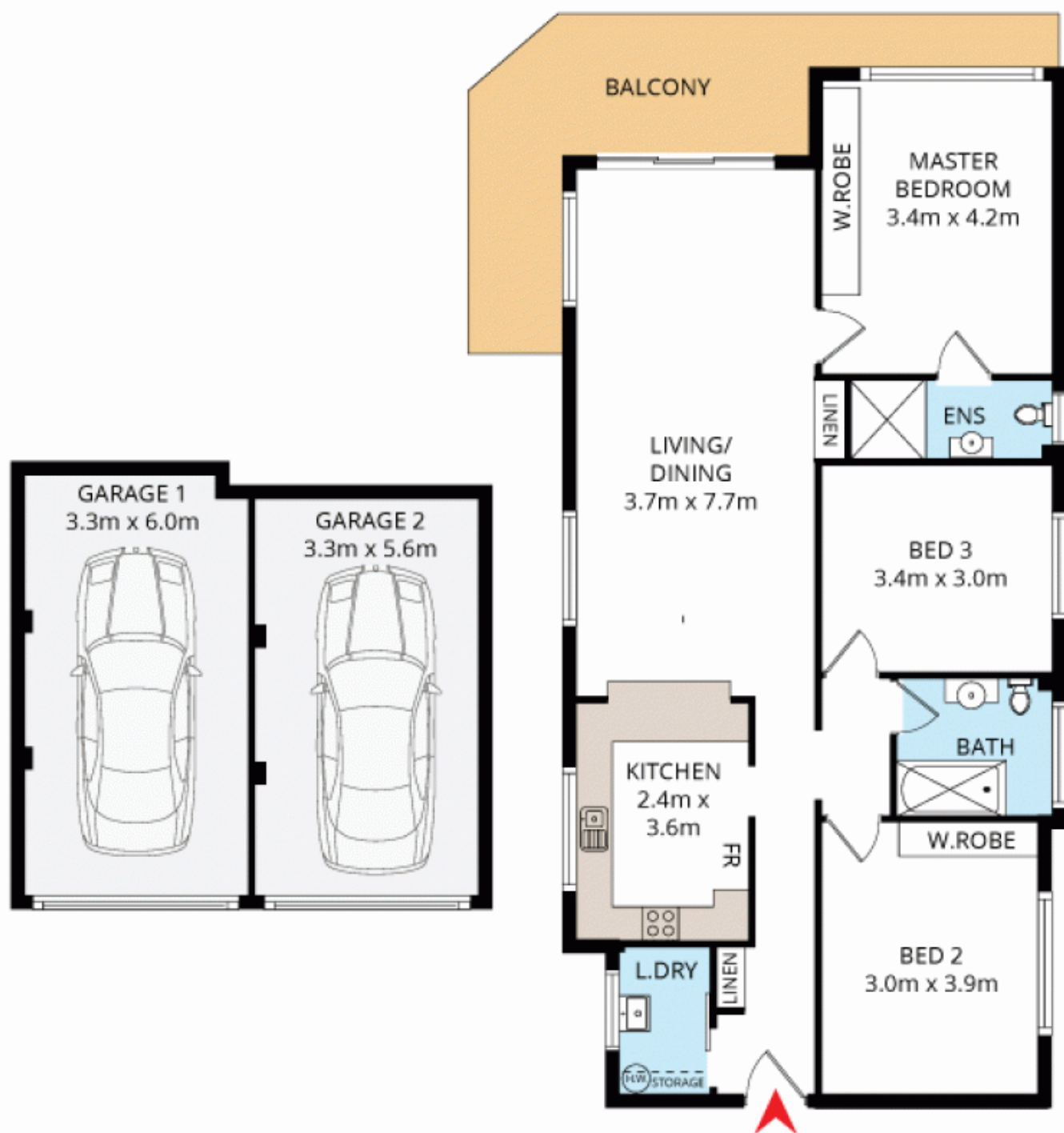
Price : \$ 1,300,000
Land Size : 173 sqm
View : <https://www.prbrealestate.com.au/6420200>



Marcello Biviano
02 9712 3938



Joe Rizzo
02 9712 3938



DISCLAIMER: THIS IS FOR ILLUSTRATIVE PURPOSES ONLY.
ALL DIMENSIONS ARE APPROXIMATE AND IT DOES NOT
CONSTITUTE PART OF ANY LEGAL DOCUMENTS.

ADDRESS:

5/25 Walton Crescent, Abbotsford