



2/406 Lyons Road RUSSELL LEA NSW

4 2 2

Due to COVID 19 the property can only be viewed by private appointment. Please contact Marcello Biviano 0410 700 700 to arrange your inspection.

Price : \$ 1,989,000

View : <https://www.prbrealestate.com.au/6609001>

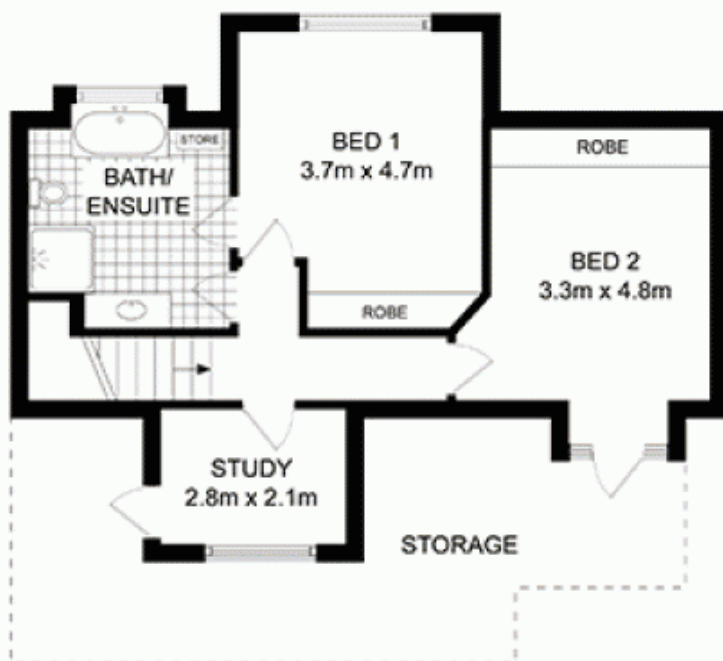
Quietly tucked away in a secluded rear position, this quality freestanding residence delivers style, space and privacy with a focus on easy-maintenance living and entertaining. Its versatile floor plan features a generous two-level layout that's fresh and bright, and well-appointed with modern up-to-date finishes. Buyers will also enjoy a private and spacious lifestyle, without compromising on convenience as it's well positioned in a great Russell Lea address that's walking distance to Five Dock's shopping strip, the popular waterfront Bay Run, local schools, long day-care centres and transport to the city.



Marcello Biviano
02 9712 3938



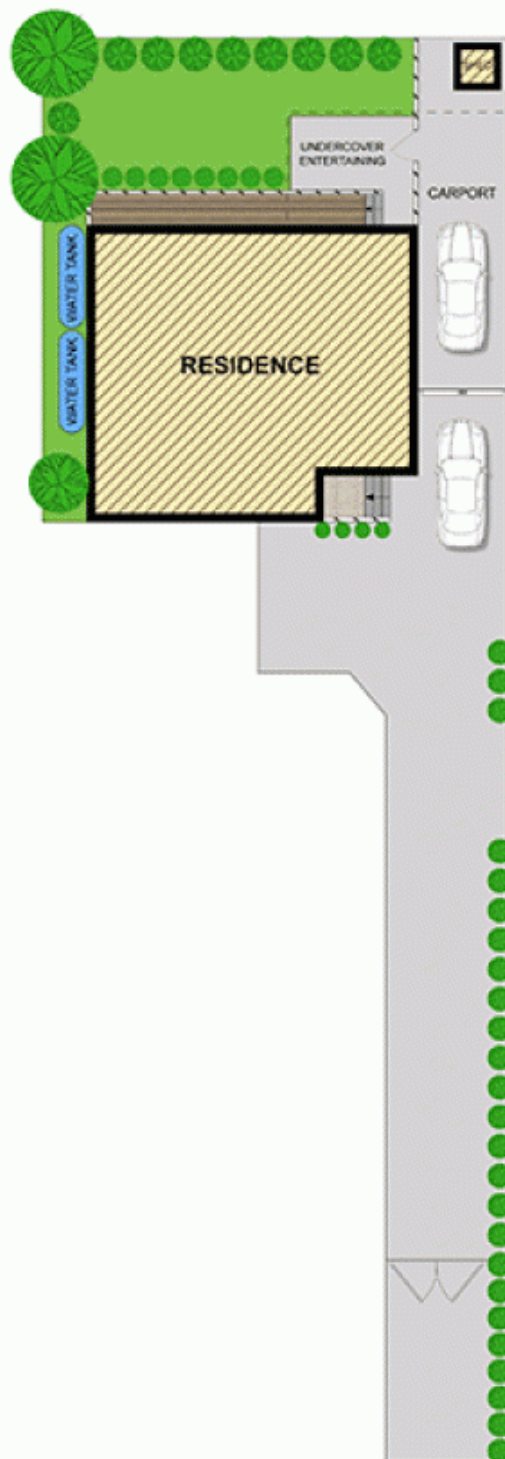
Joe Rizzo
02 9712 3938



FIRST FLOOR



GROUND FLOOR



**SITE PLAN
(NOT TO SCALE)**

PRB
Real Estate



**2/406 LYONS ROAD,
RUSSELL LEA**

DISCLAIMER: WE HAVE OBTAINED ALL INFORMATION IN THIS DOCUMENT FROM SOURCES WE BELIEVE TO BE RELIABLE. HOWEVER, WE CANNOT GUARANTEE ITS ACCURACY. PROSPECTIVE PURCHASERS ARE ADVISED TO CARRY OUT THEIR OWN INVESTIGATIONS