



**371A Great North Road WAREEMBA NSW**

3 2 2

Displaying architectural style and light-filled luxury, this quality-built residence’s sophisticated design showcases a sleek contemporary feel with flowing interiors and fantastic alfresco areas. This is the essence of family excellence boasting a striking modern look and a low-maintenance design that focuses on easy living and in/outdoor entertaining, capturing elevated water views from the upper level. The premium address also offers exceptional convenience and is a few footsteps from Wareemba’s village scene, with waterfront parks, bus transport and schools within walking distance.

**Land Size** : 263 sqm  
**View** : <https://www.prbrealestate.com.au/6907060>

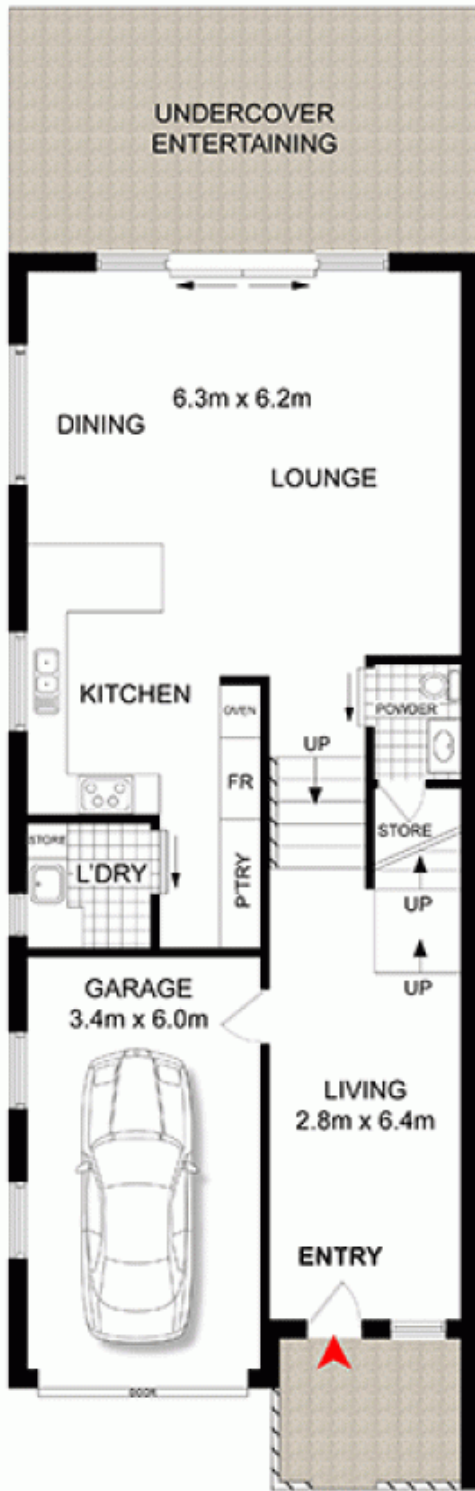
- \* Solid construction with full double brick and concrete slab throughout
- \* Sleek and fresh design with a breezy open living and dining area
- \* Level flow to a covered dining patio and landscaped back



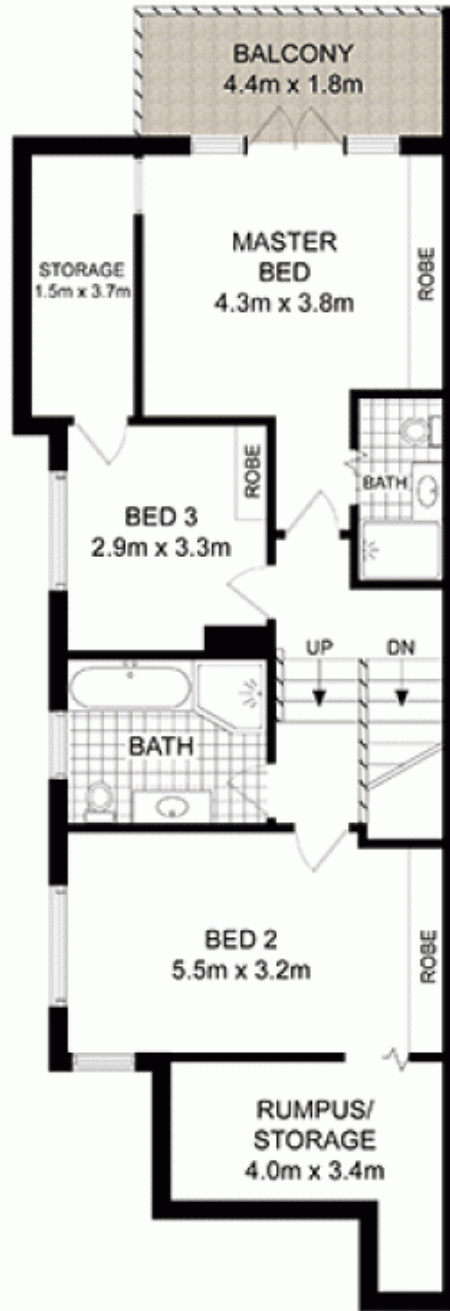
**Marcello Biviano**  
 02 9712 3938



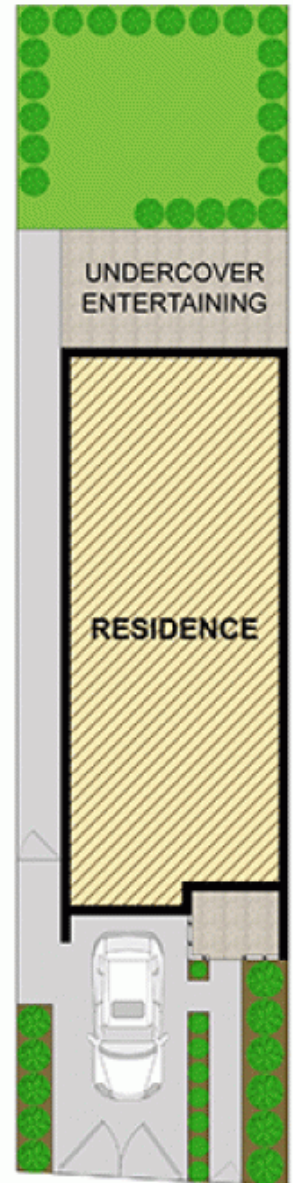
**Joe Rizzo**  
 02 9712 3938



GROUND FLOOR



FIRST FLOOR



SITE PLAN (not to scale)