



**25 Lea Avenue RUSSELL LEA NSW**

4 🏠 2 🚗 3 🚗

Nestled along a wonderfully peaceful street and instantly appealing, this full brick family home unveils a highly desirable lifestyle brimming with space, light and convenience in a coveted address. The stunning haven occupies a sizeable 689sqm parcel while flaunting huge proportions, contemporary finishes and the exciting potential for future redevelopment (STCA) if desired. It boasts an excellent setting with walking distance to Five Dock village, schools, restaurants and city-bound transport and moments from waterfront parks.

**Land Size** : 696 sqm  
**View** : <https://www.prbrealestate.com.au/7559117>

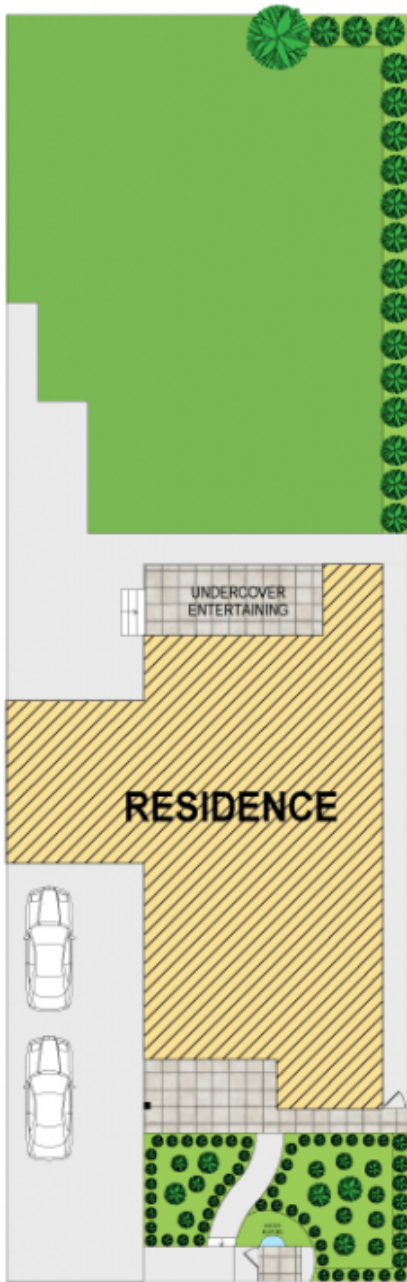
- \* Secure entry enhanced by water feature and privacy hedging
- \* Four oversized bedrooms all fitted with large built-in wardrobes
- \* Bright casual living and dining zone flows effortlessly to outdoors



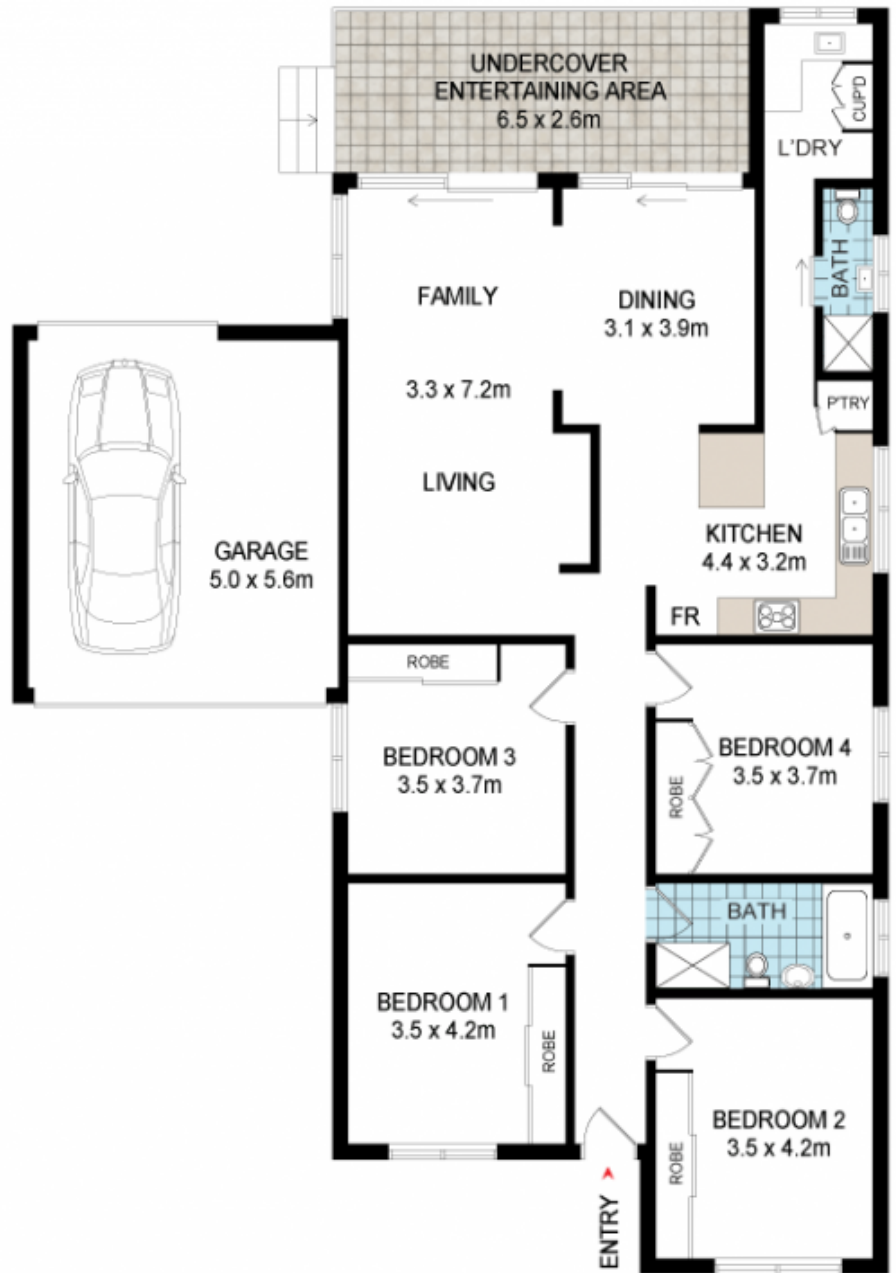
**Joe Rizzo**  
02 9712 3938



**Marcello Biviano**  
02 9712 3938



SITE PLAN (not to scale)



## 25 LEA AVENUE, RUSSELL LEA

DISCLAIMER: WE HAVE OBTAINED ALL INFORMATION IN THIS DOCUMENT FROM SOURCES WE BELIEVE TO BE RELIABLE; HOWEVER, WE CANNOT GUARANTEE ITS ACCURACY. PROSPECTIVE PURCHASERS ARE ADVISED TO CARRY OUT THEIR OWN INVESTIGATIONS