

512/18 Woodlands Avenue BREAKFAST POINT NSW

2  2  2 

Located on Level 5 of the renowned Lighthouse Building in the Award Winning Breakfast Point, this corner apartment boasts high end updates and has never been offered to the market since completion. Boasting waterviews from everyroom, this luxury apartment is an opportunity not to be missed.

- * 2 bedrooms with Built Ins and Water-views
- * 2 Bathrooms, En-suite with Bath and Shower
- * Tiled Living, Dining and Kitchen, Built in Bar with Vintec
- * Separate Laundry with Dryer, Large Linen cupboard
- * Double Basement Parking with Separate Storage Cage
- * Air conditioning, Breakfast Bar, Stainless Steel Appliances
- * Expansive corner position with one common wall
- * Country Club facilities including lap and lagoon pools, gyms and tennis courts

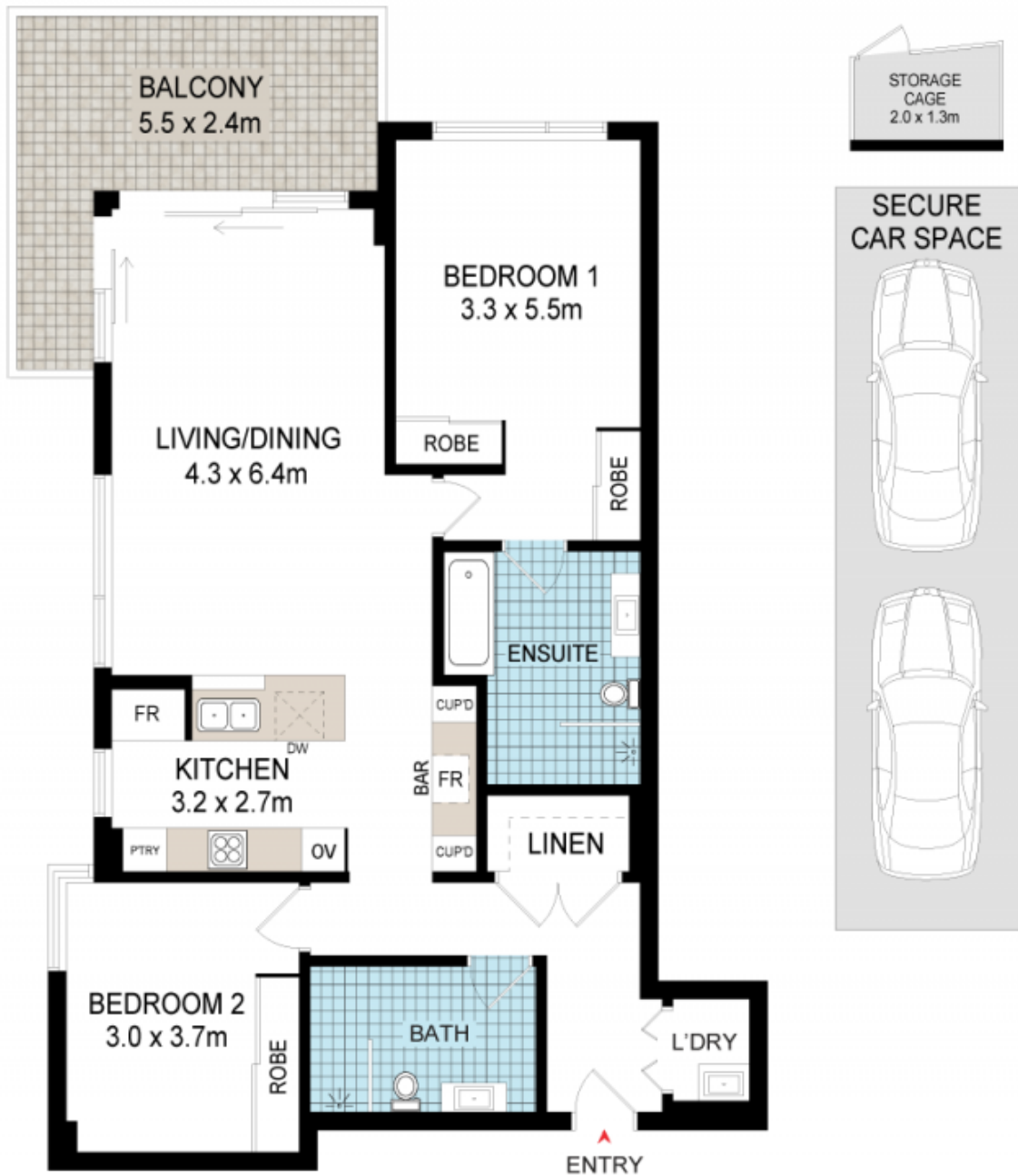
Price : \$ 1,550,000
Land Size : 139 sqm
View : <https://www.prbrealestate.com.au/7915115>



Marcello Biviano
02 9712 3938



Joe Rizzo
02 9712 3938



512/18 WOODLANDS AVENUE,
BREAKFAST POINT

DISCLAIMER: WE HAVE OBTAINED ALL INFORMATION IN THIS DOCUMENT FROM SOURCES WE BELIEVE TO BE RELIABLE; HOWEVER, WE