

#### 4A Feilberg Place ABBOTSFORD NSW

4 3 4

A premium showcase of family luxury has come to Abbotsford in this spectacular architectural residence that's perfectly positioned within footsteps to the waters edge. Impressively proportioned, supremely stylish and embracing quality finishes throughout, it delivers a spacious indoor-outdoor living environment and makes a stunning home for the entertainer. Its quiet neighbourhood cul-de-sac also offers excellent convenience as it is within short walking distance to Campbell Park and foreshore walks around Five Dock Bay.

- \* A sleek architectural design with an airy and open planned living space
- \* Polished concrete flooring, feature electric fireplace and custom built-in joinery
- \* Level flow to an automated louvred covered deck with built-in BBQ and private garden

**Price** : For Sale \$3,995,000

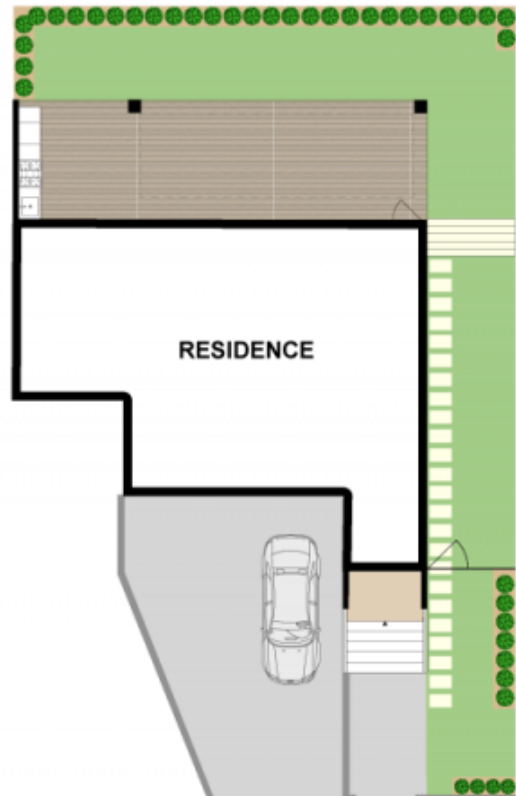
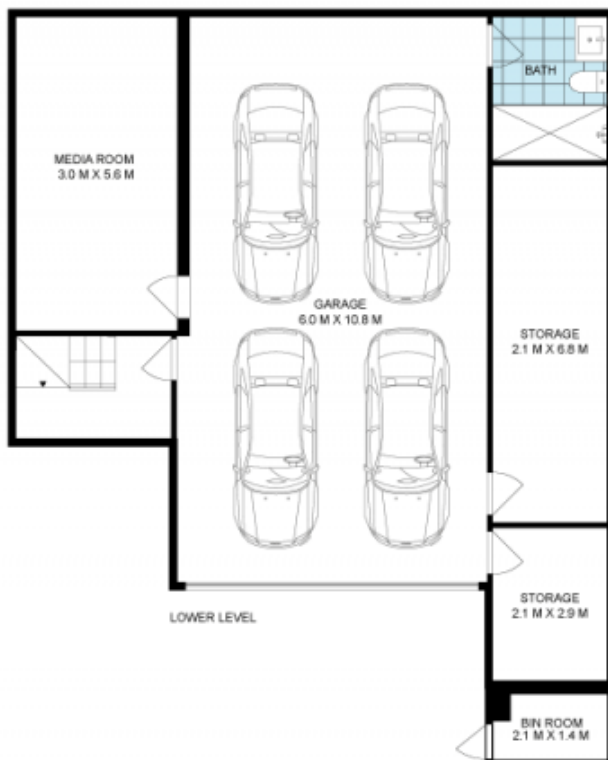
**View** : <https://www.prbrealestate.com.au/7924457>



**Marcello Biviano**  
02 9712 3938



**Joe Rizzo**  
02 9712 3938



## 4A FEILBERG PLACE ABBOTSFORD

DISCLAIMER: WE HAVE OBTAINED ALL INFORMATION IN THIS DOCUMENT FROM SOURCES WE BELIEVE TO BE RELIABLE; HOWEVER, WE CANNOT GUARANTEE ITS ACCURACY. PROSPECTIVE PURCHASERS ARE ADVISED TO CARRY OUT THEIR OWN INVESTIGATIONS