



**22 Pine Avenue RUSSELL LEA NSW**

3 2 2

This immaculately preserved full brick bungalow and its generous 697sqm east-to-rear allotment opens up a world of opportunity to enthusiastic families, renovators or builders (STCA). Buyers can be assured of a premium opportunity combining spacious proportions, large land size and vast untapped potential. It is presented in solid and comfortable order and enjoys a quiet street setting that’s just around the corner from local village shops, cafes and schools, as well as bus transport along Lyons Road.

- \* Extra-wide street frontage with driveway access to a lock-up garage
- \* A large single-level layout featuring generous living and dining areas

**Type** : House  
**Land Size** : 697 sqm  
**View** : <https://www.prbrealestate.com.au/8043010>

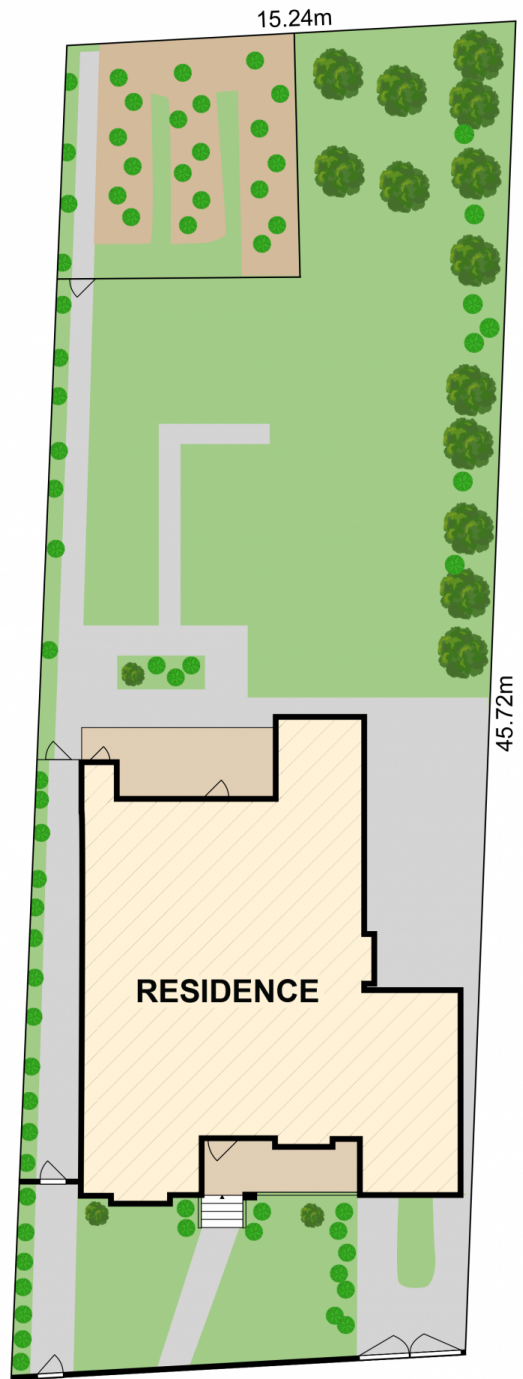
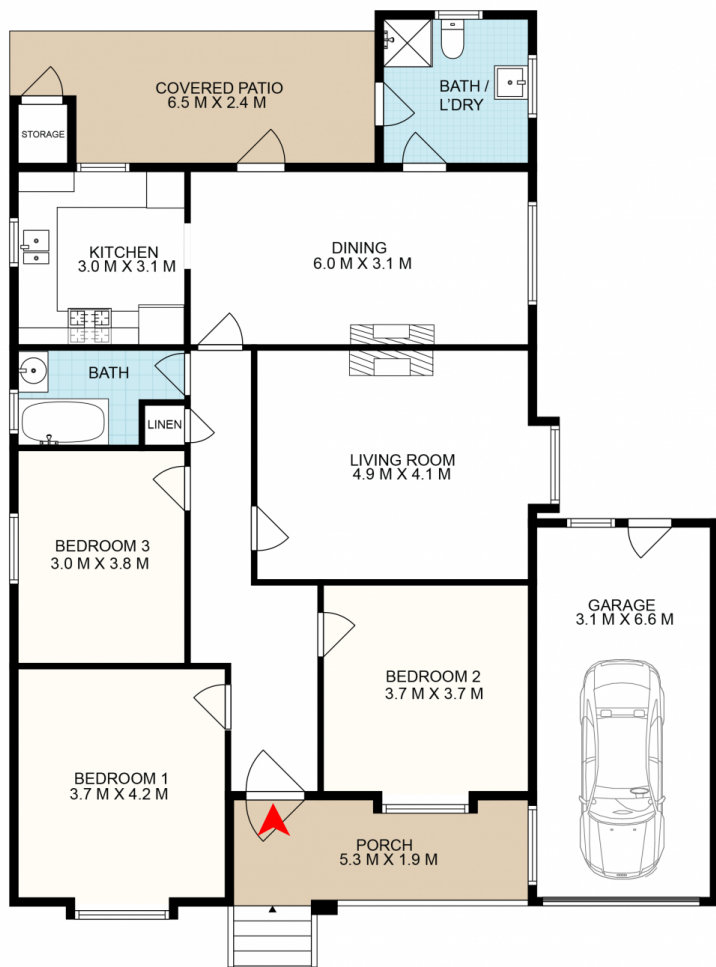


**Marcello Biviano**  
 02 9712 3938



**Joe Rizzo**  
 02 9712 3938

[For full version visit the website](https://www.prbrealestate.com.au)



PRB | REAL ESTATE



22 PINE AVENUE  
RUSSELL LEA

DISCLAIMER: WE HAVE OBTAINED ALL INFORMATION IN THIS DOCUMENT FROM SOURCES WE BELIEVE TO BE RELIABLE; HOWEVER, WE CANNOT GUARANTEE ITS ACCURACY. PROSPECTIVE PURCHASERS ARE ADVISED TO CARRY OUT THEIR OWN INVESTGATIONS