



12 Liege Street RUSSELL LEA NSW

4 3 3

Newly recreated from a traditional Californian bungalow into a luxuriously appointed contemporary retreat, this immaculate two storey family haven is designed for a lifestyle of relaxed indoor/outdoor entertaining. Set beneath soaring ceilings, drenched in sunlight and flowing out to level, north facing rear yard, the home is set in a central yet peaceful location, minutes walk to the waterfront, city buses and caf  s.

- * Stunning glass enclosed open plan lounge and dining
- * Timber entertaining deck and child-friendly lawns
- * Saltwater swimming pool framed by timber sundecks
- * Gourmet CaesarStone kitchen with induction cooking
- * Private master retreat with walk-in robe and ensuite
- * Study/kid's retreat, guest w/c, timber floorboards
- * Secure parking, a/v and alarm security, ducted a/c

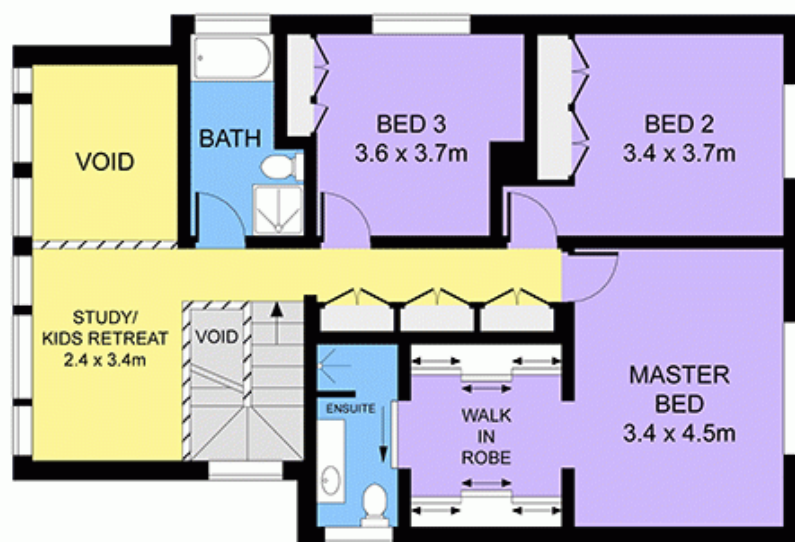
View : <https://www.prbrealestate.com.au/804956>



Marcello Biviano
02 9712 3938



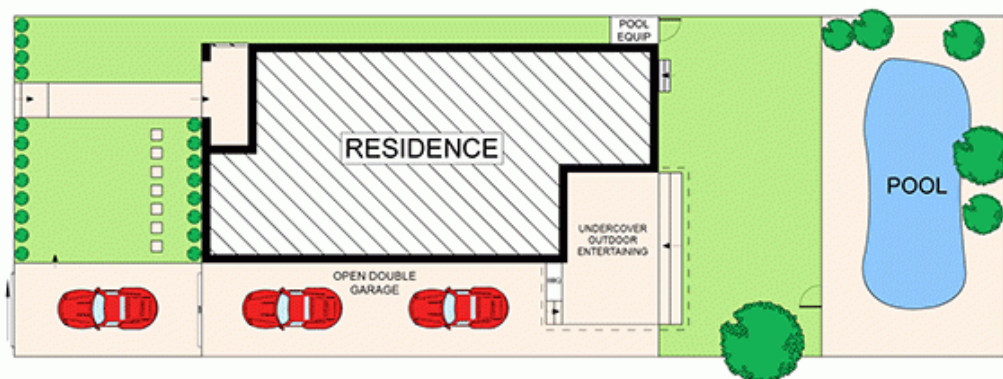
Joe Rizzo
02 9712 3938



FIRST FLOOR



GROUND FLOOR



**SITE PLAN
(NOT TO SCALE)**



12 LIEGE STREET, RUSSELL LEA Floorplan by Only Real Estate Ph: 1300 760 390

DISCLAIMER: PLANS SHOWN ARE FOR PRESENTATION PURPOSES AND ARE NOT PART OF ANY LEGAL DOCUMENT. ALL MEASUREMENTS AND FIGURES ARE APPROXIMATE.