





**6/35 Regatta Road CANADA BAY NSW**

**2**  **1.500**

 **1** 

Enjoy a tranquil, low maintenance lifestyle, footsteps to the water's edge from this terrace-style two storey townhome, tucked away at the rear of an intimate security complex of 11. Modern, well presented and ready to move straight into, its bright interiors and private courtyard offer plenty of potential to personalise to taste.

A great entry level opportunity into this sought-after bayside community, the home is just metres to waterfront parkland, Cintra Park sports facilities and Barnwell Park Golf Club.

- \* Open plan living/dining with easycare tile floors
- \* Paved courtyard, sized for relaxed alfresco dining
- \* Two upstairs bedrooms, master with walk-in robe
- \* Quality kitchen including dishwasher
- \* Neat bathroom with separate bath and shower
- \* A/C, oversized LUG with storage, visitors' parking

**Price** : \$ 662,000

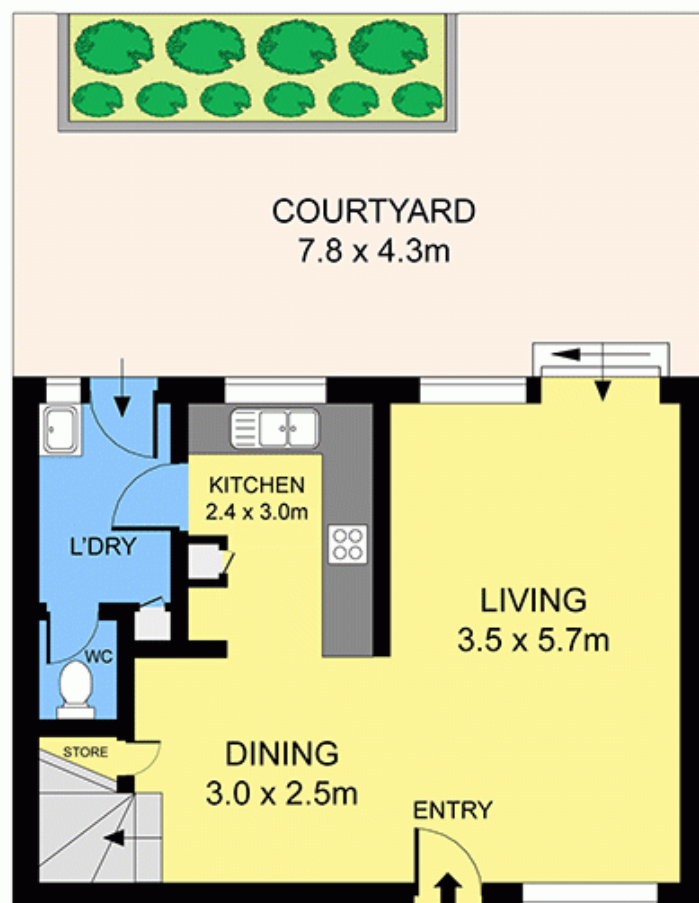
**View** : <https://www.prbrealestate.com.au/843444>



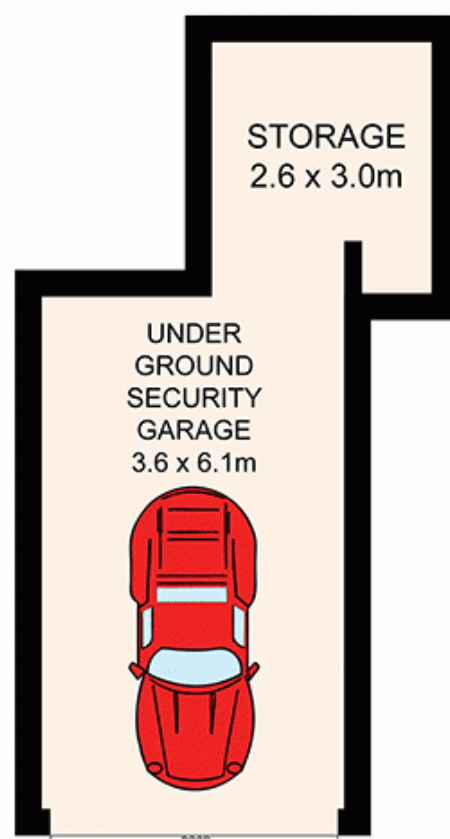
**Marcello Biviano**  
**02 9712 3938**



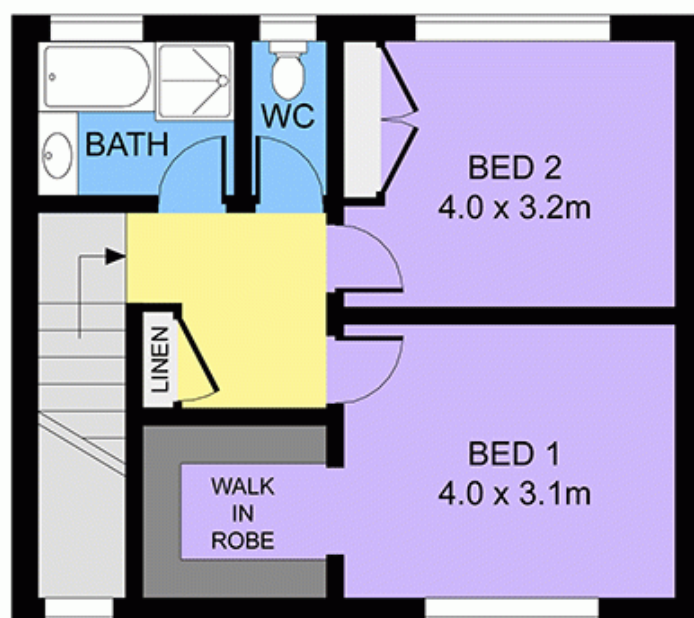
**Joe Rizzo**  
**02 9712 3938**



**GROUND FLOOR**



**UNDER GROUND FLOOR**



**FIRST FLOOR**



6/35 REGATTA ROAD, CANADA BAY Floorplan by Only Real Estate Ph: 1300 760 390

DISCLAIMER: PLANS SHOWN ARE FOR PRESENTATION PURPOSES AND ARE NOT PART OF ANY LEGAL DOCUMENT. ALL MEASUREMENTS AND FIGURES ARE APPROXIMATE.